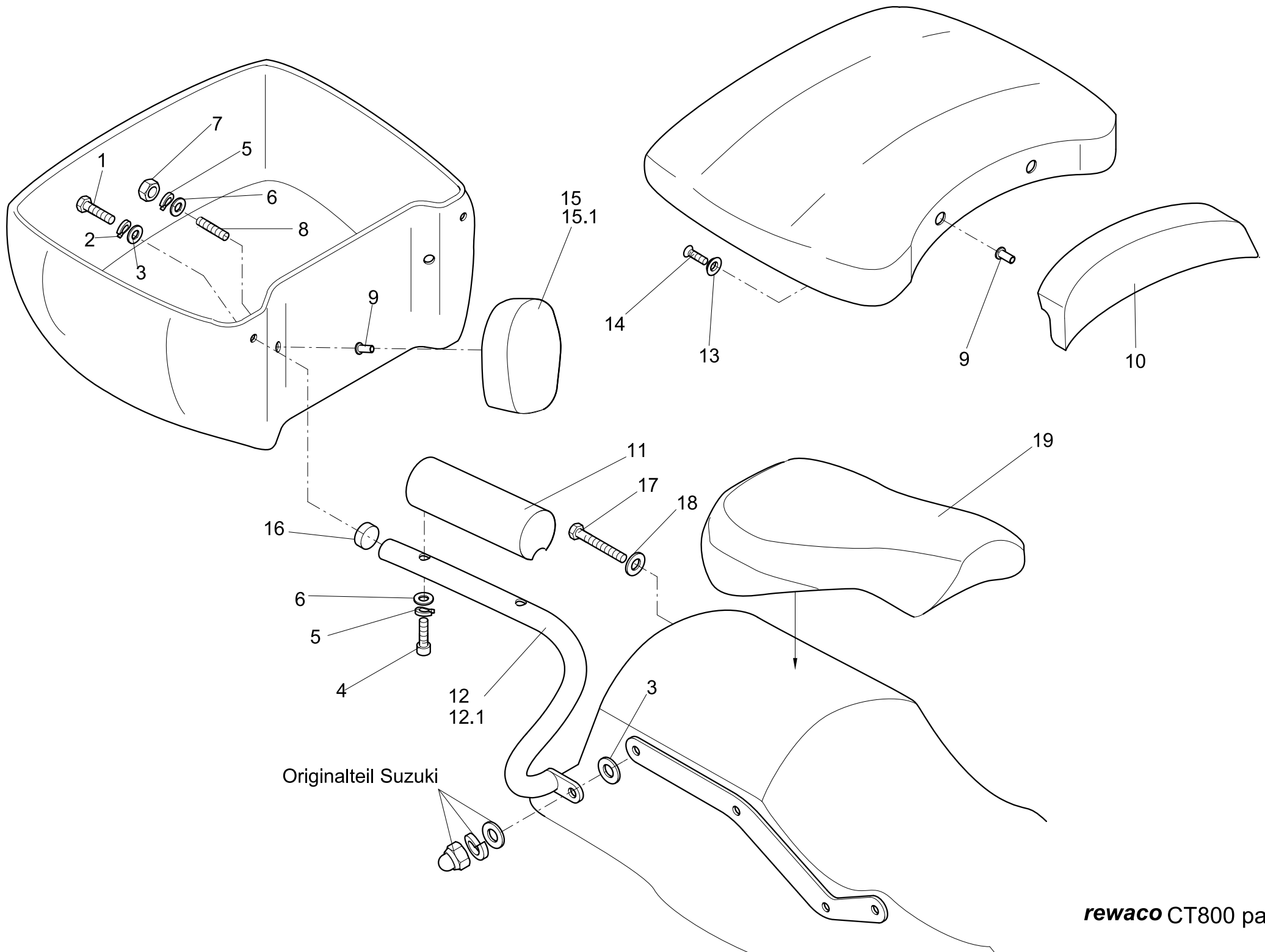




**rewaco**<sup>®</sup>  
*refreshes your life.*

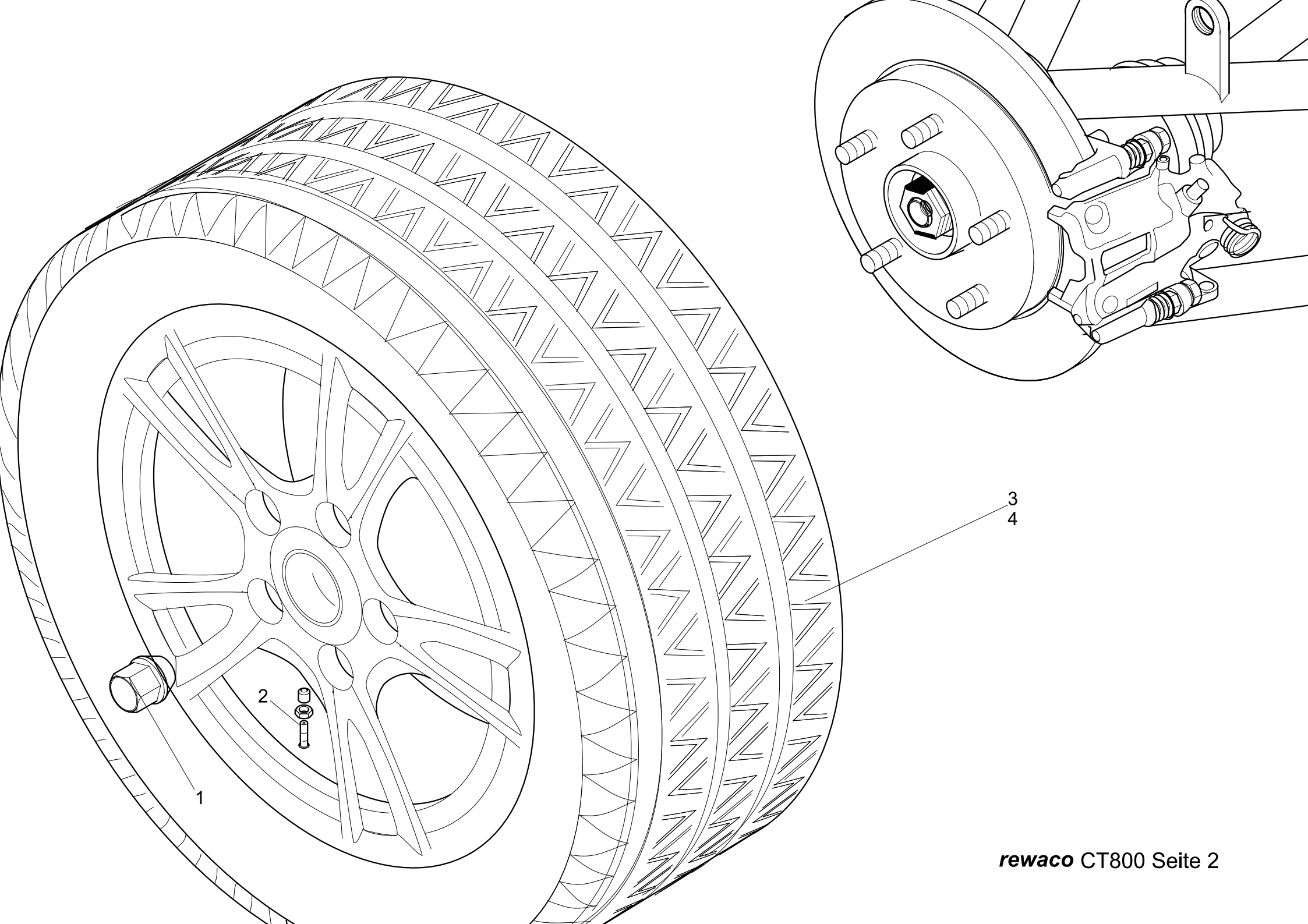
**CT 800 S**





## Modell: rewaco CT800 Seite: 1

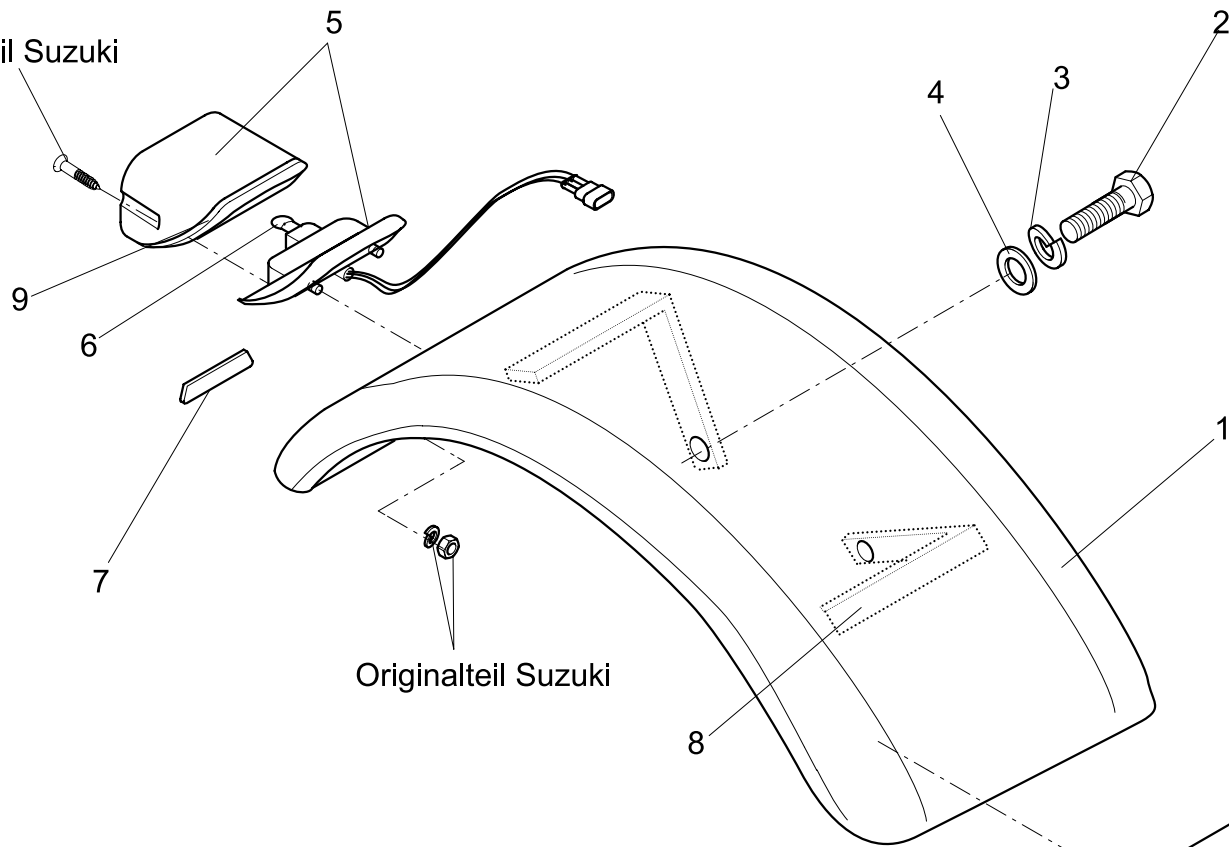
Pos.	Q'ty	Art.-No.	Article Description
1	2	0933 A2 8/25	hexagon screw A2 M08X25
2	2	0127 B A2 8	spring lock washer Form B A2 M8
3	2	9021 A2 8	washer, body, A2 M8
4	4	0912 A2 6/20	hexagon socket screw A2 M06X20
5	6	0127 B A2 6	spring lock washer Form B A2 M6
6	6	0125 A2 6	washer A2 M6
7	2	0934 A2 6	hexagon nut A2 M06
8	2	09-00866-U-01	stud bolt 8.8 zinc plated M10X30
9	4	09-00591-U-01	draw in rivet 9x16 aluminium, screw in rivet M6
10	1	00-00927-S-01	bearing shaft, pedals, FX
11	2	06-00926-F-01	Armrest cushion for guard rail
12	1	06-00925-F-01	rail CT800, lh
12,1	1	06-00924-F-01	rail CT800, rh
13	2	07-00190-U-01	washer for hexagon socket countersunk flathead screw M6
14	2	09-00707-U-01	countersunk flathead screw A2 M6x30 with allan head
15	1	00-00928-S-01	bearing shaft, pedals, FX
15,1	1	00-00929-S-01	bearing shaft, pedals, FX
16	2	00-01048-S-01	bearing shaft, pedals, FX
17	1	09-00708-U-01	countersunk flathead screw A2 M6x50 with allan head
18	1	07-00190-U-01	washer for hexagon socket countersunk flathead screw M6
19	1	06-00890-C-01	seat cushion for front seat FX5, black/blue, FX4/FX6 since 3/2008



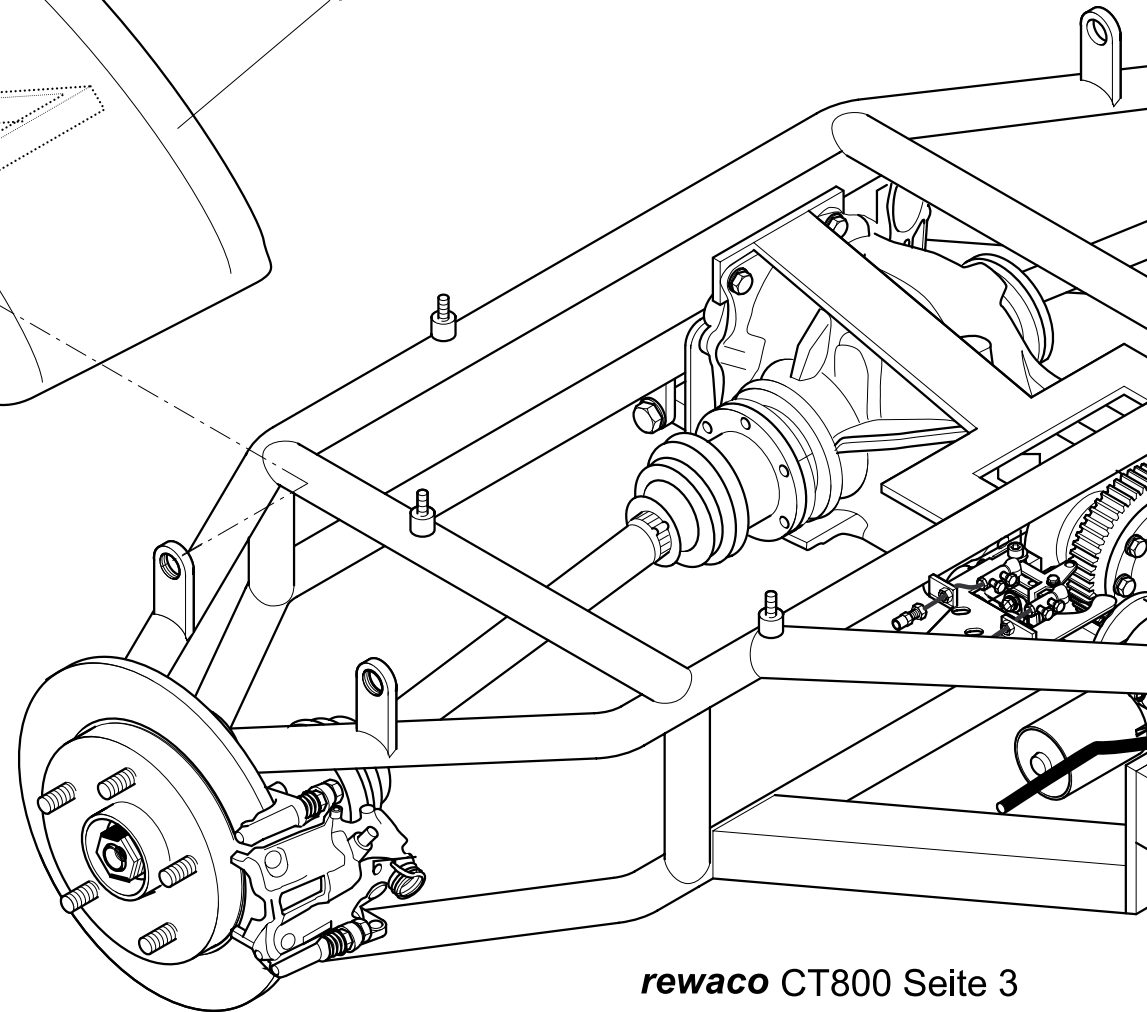
## Modell: rewaco CT800 Seite: 2

Pos.	Q'ty	Art.-No.	Article Description
1	10	08 0051 1	closed wheel nut M12x1.5x35 /conus 60°, sw 19, class 8, zinc plated
2	2	20 0660 2	rubber valve, tire
3	2	08-00716-U-01	rim, aluminium, CT/RC11 CSS beamless silver 7x16 5/120 ET+44
4	2	08-00762-U-01	rim 10x17 5/120 ET-20, silver incl. wheel lock + cover

Originalteil Suzuki

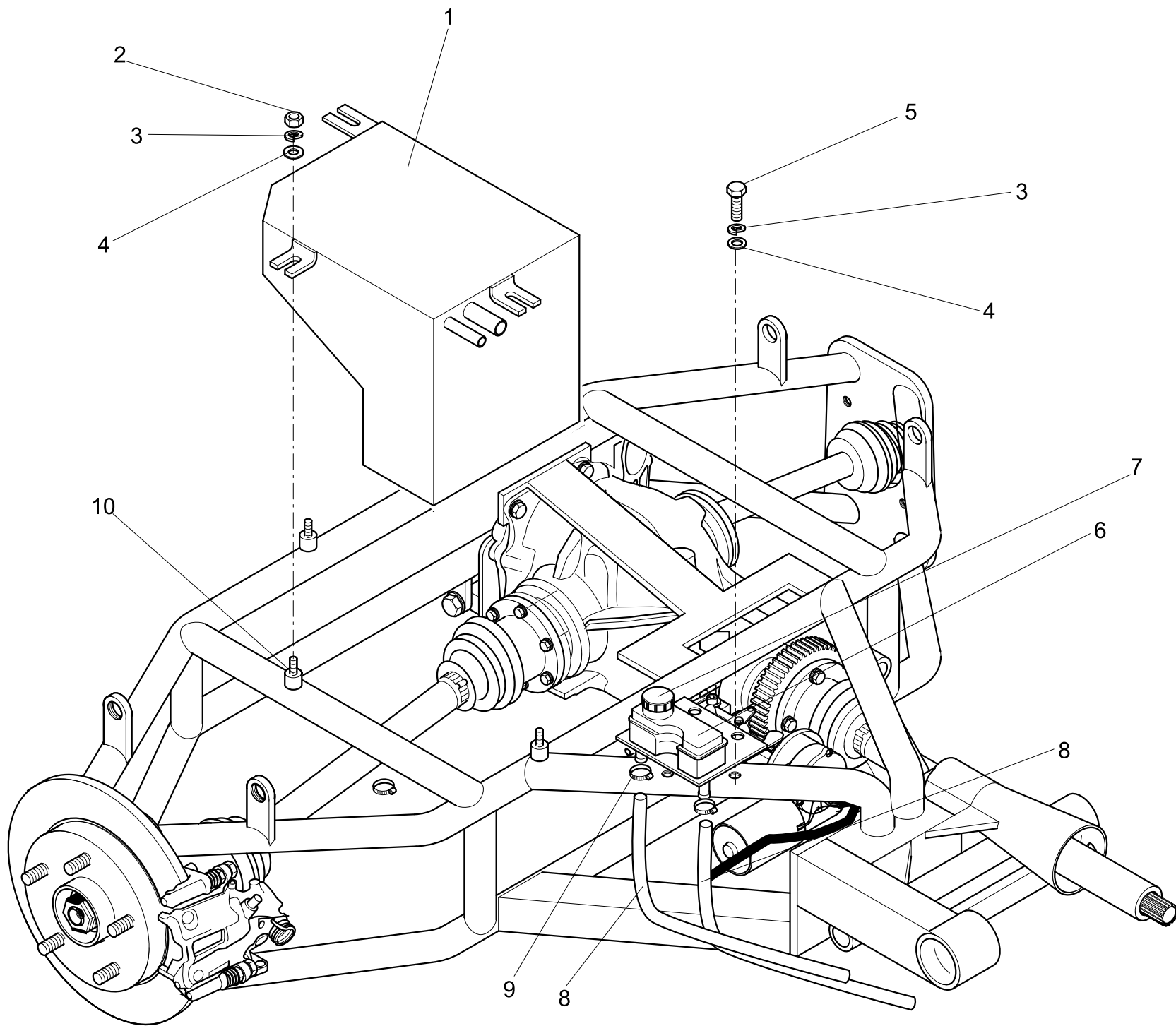


Originalteil Suzuki



## Modell: rewaco CT800 Seite: 3

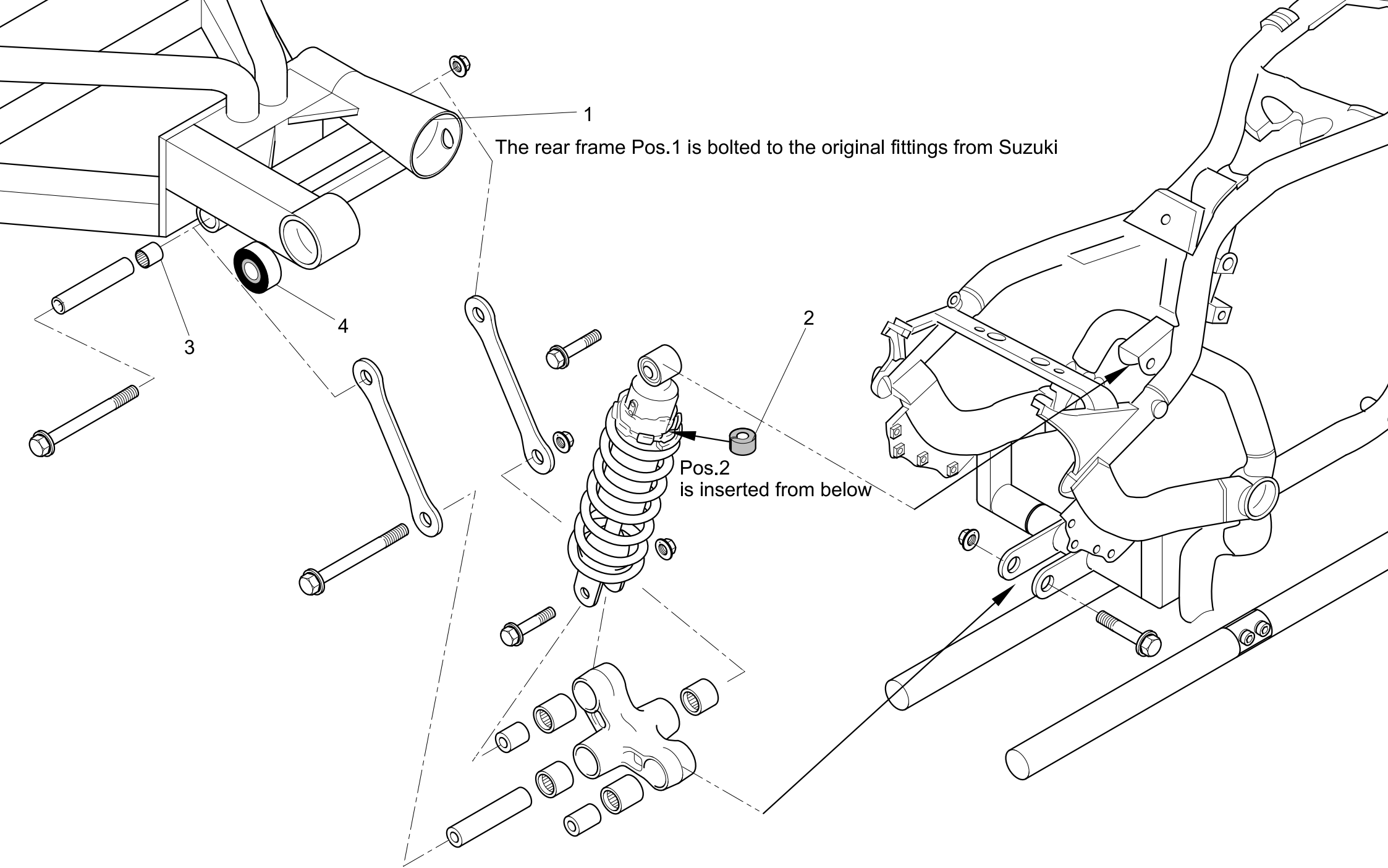
Pos.	Q'ty	Art.-No.	Article Description
1	1	06-01007-F-01	mudguard, for tires 335/30-18
1,1	1	06-01006-F-01	mudguard, for tires 335/30-18
2	4	0961 ZN 10/1.25/30	hexagon screw 10.9 zinc plated M10x1.25x30
3	4	0127 B A2 10	spring lock washer Form B A2 M10
4	4	0125 A2 10	washer A2 M10
5	2	01-00741-S-01	tail light, chrome, rh/lh CT800
6	2	01-00019-U-01	bulb 12V 21/5W
7	2	06-00872-S-01	pad, pedal, chrome plated (pair)
8	4	00-00892-S-01	bracket for mud guard CT800 for 205/55-16
9	2	00-00908-S-01	bearing shaft, pedals, FX





## Modell: rewaco CT800 Seite: 4

Pos.	Q'ty	Art.-No.	Article Description
1	1	00-00915-S-01	bearing shaft, pedals, FX
2	3	0934 A2 6	hexagon nut A2 M06
3	5	0127 B A2 6	spring lock washer Form B A2 M6
4	5	9021 A2 6	washer, body, A2 M6
5	2	0933 A2 6/25	hexagon screw A2 M06X25
6	1	03-00566-01	brake fluid reservoir
7	1	04 0010 2	cap, brake fluid reservoir
8	2	00-00899-S-01	cable, brake fluid reservoir CT800
9	2	16 0120 5	hose clamp Cobra 18 mm
10	2	03 0046 2.1	rubber cushion for fan RF1 / electr. fuel pump FX6 (20x15 with thread M6x15/rubber cushion M6)
11	1	00-00909-S-01	bearing shaft, pedals, FX
12	2	00-00911-S-01	bearing shaft, pedals, FX

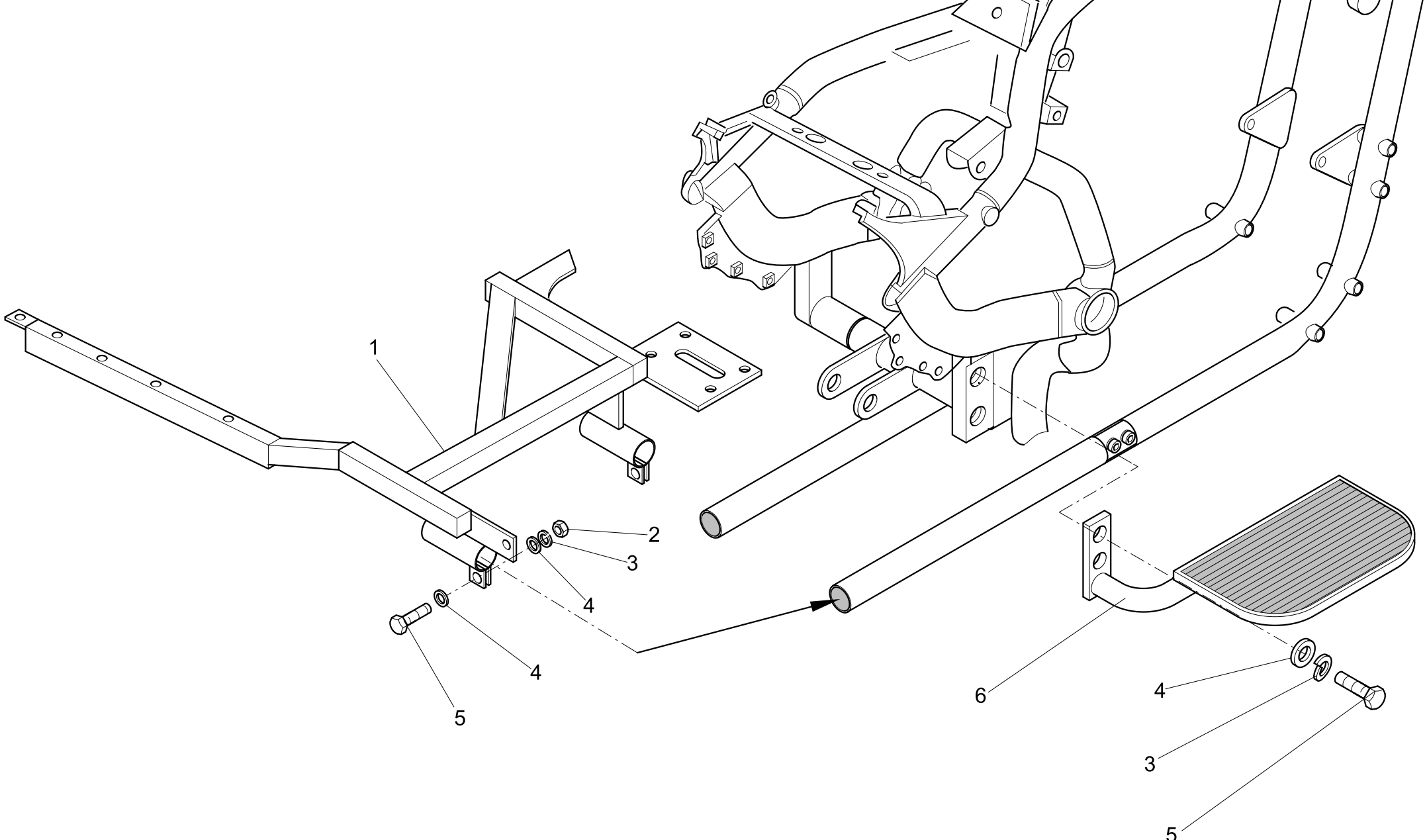


The rear frame Pos.1 is bolted to the original fittings from Suzuki

Pos.2 is inserted from below

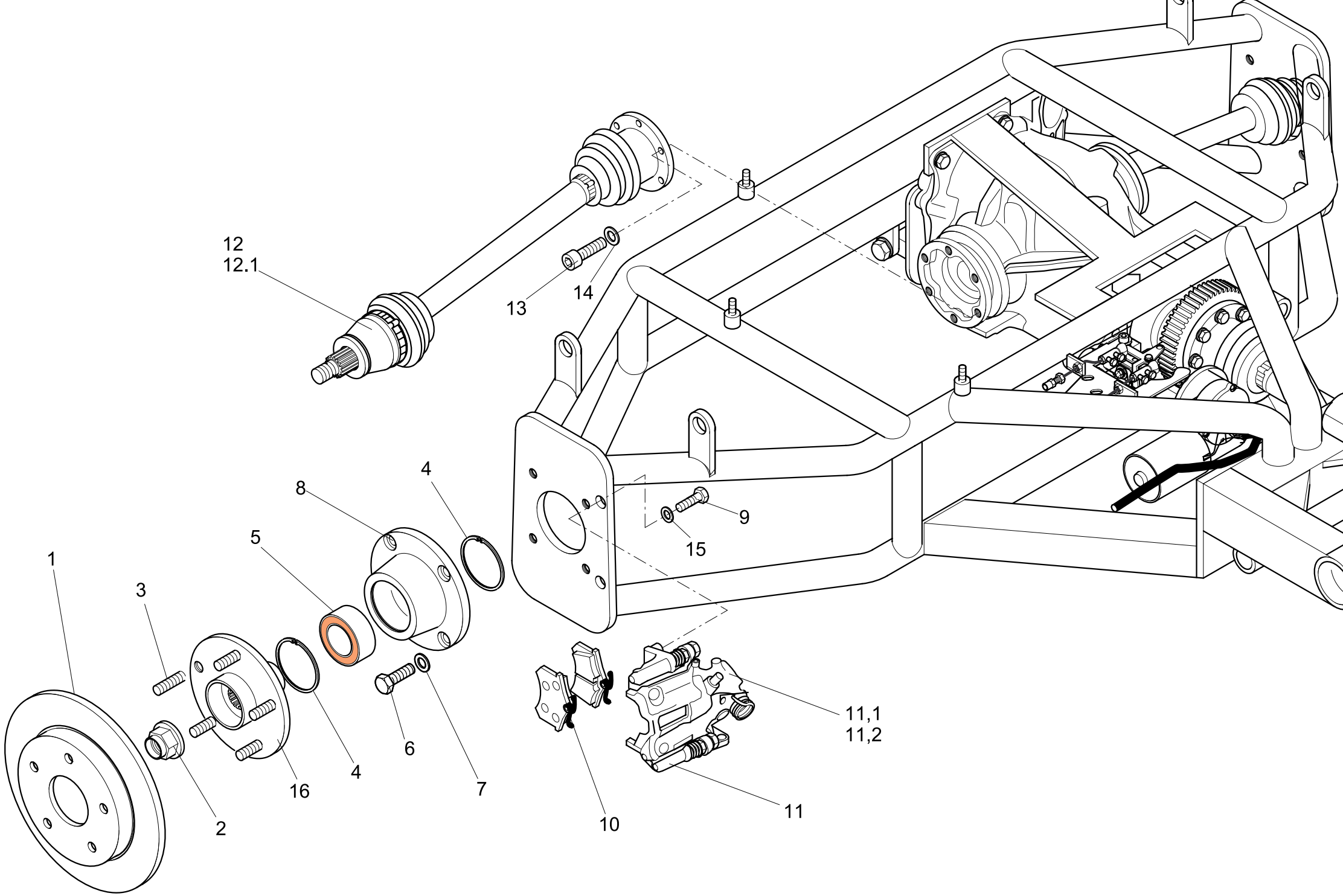
## Modell: rewaco CT800 Seite: 5

Pos.	Q'ty	Art.-No.	Article Description
1	1	00-01058-S-01	framerearreinforcement (laserpart) CT800
2	1	08-00730-S-01	deflectiondelimiter / CT800
3	2	08-00728-S-01	bearing linkage compression leg CT800 bearing (HK1712) for coupling bar linkage
4	1	08-00741-U-01	Swing bearing, sealed / CT800



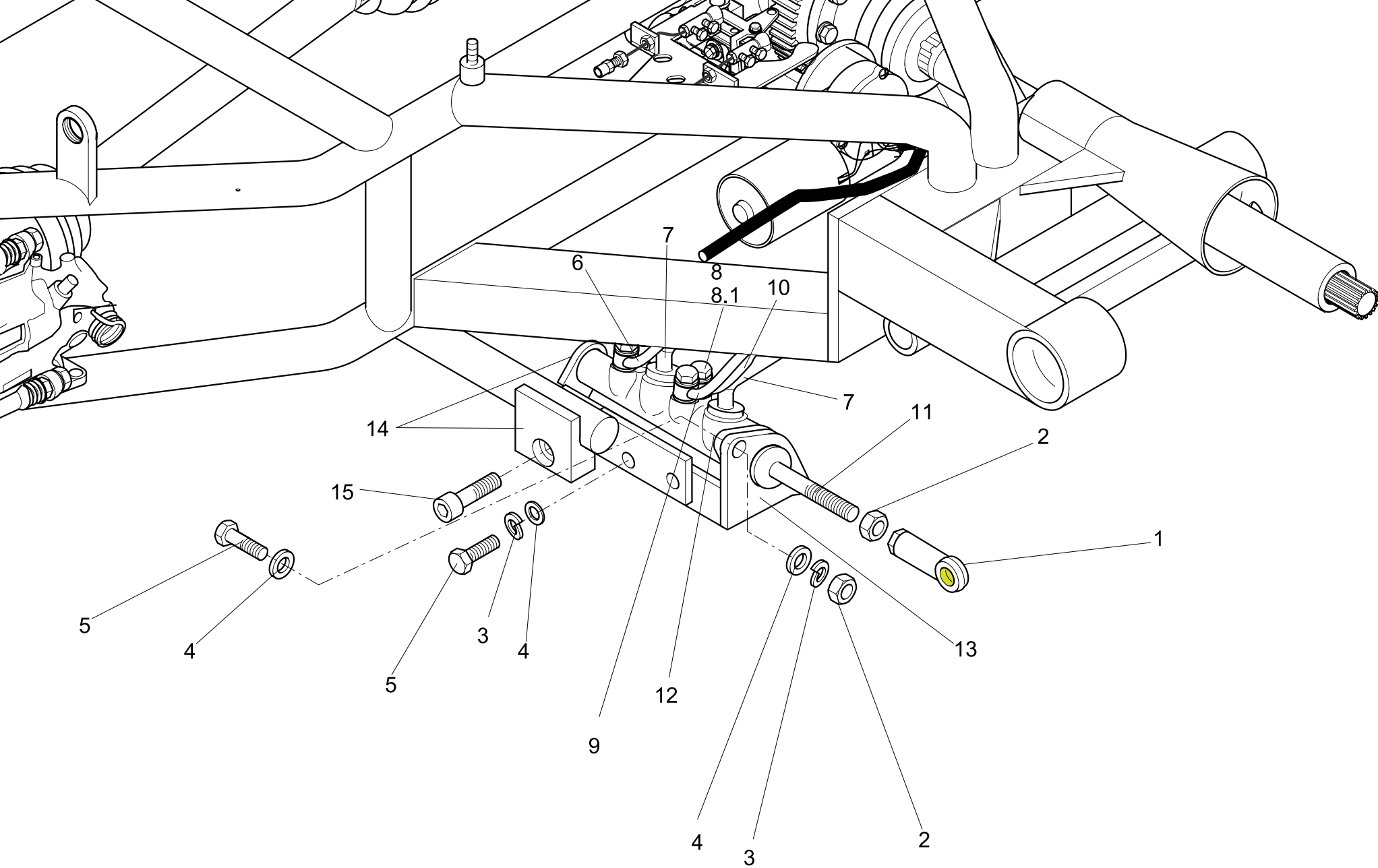
## Modell: rewaco CT800 Seite: 5,1

Pos.	Q'ty	Art.-No.	Article Description
1	1	03-00888-E-01	bearing shaft, pedals, FX
2	2	0934 A2 8	hexagon nut A2 M08
3	6	0127 B A2 8	spring lock washer Form B A2 M8
4	8	0125 A2 8	washer A2 M8
5	6	0933 A2 8/25	hexagon screw A2 M08X25
6	1	06-00857-S-01	pair of footrest, rear (CT800/T1800)



## Modell: rewaco CT800 Seite: 6

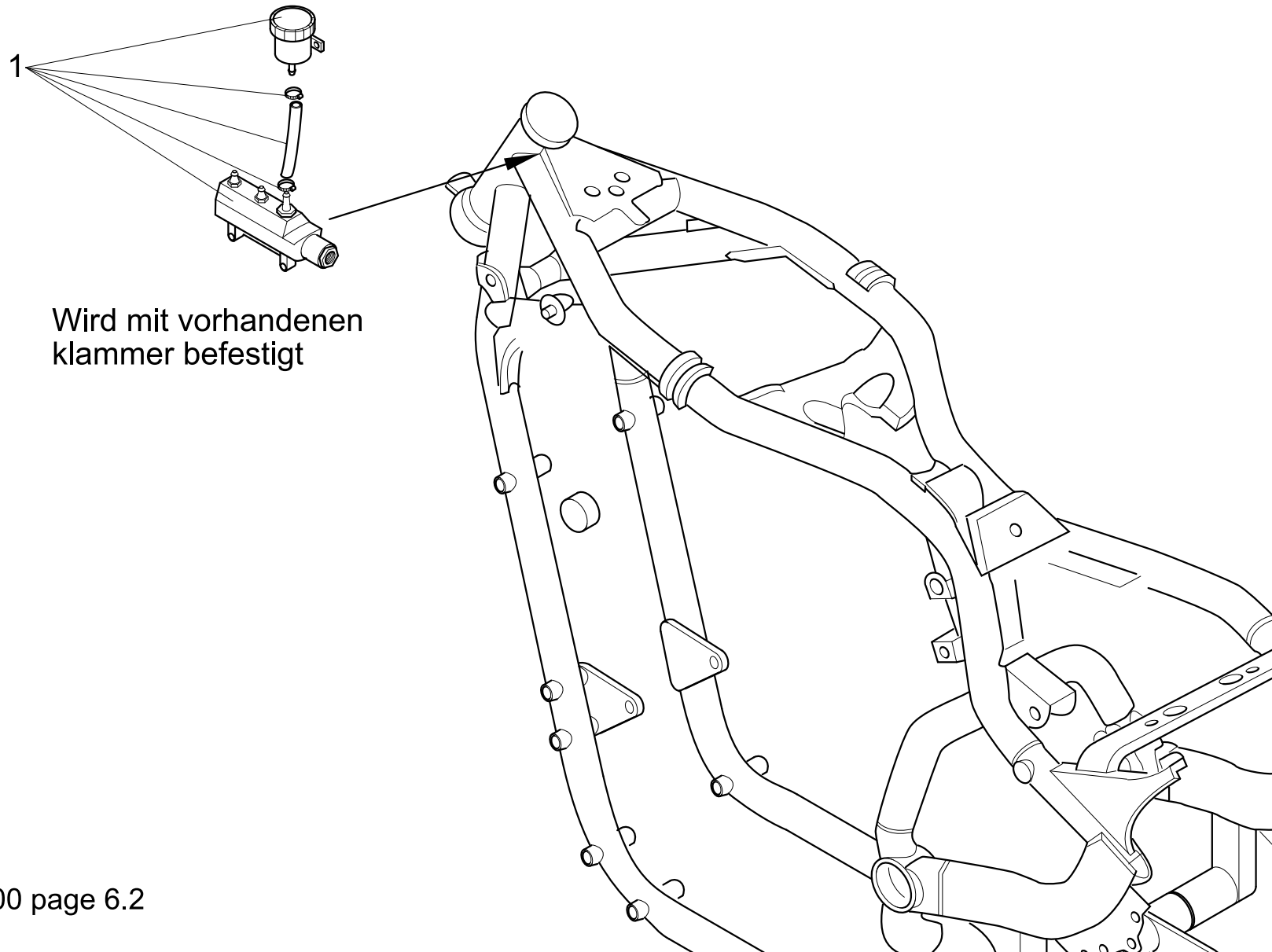
Pos.	Q'ty	Art.-No.	Article Description
1	2	33 160 80 3	rear brake disk RF1, 5 bore, hole circle 120
2	2	13-00122-X-01	plastic nut for tow bar cover S1 + S2
3	10	EA 44.1010.1	knurled bolt for wheel hub M12x1.50x40
4	4	04-00678-B-01	circlip 77x2
5	2	05 0175 1.1	wheel bearing RF1 and FX
6	8	0961 ZN 10/1.25/25	hexagon screw 10.9 zinc plated M10x1.25x25
7	8	0125 ZN 10	washer zinc plated M10
8	2	03-00662-F-01	bearing seat for wheel bearing RF1
9	4	0933 ZN 10/30	hexagon screw zinc plated M10X30
10	1	02-00727-U-01	rear brake pads FX/RF
11	2	35 0017 1	brake bracket for brake pads FX/RF since 04/2006
11,1	1	35 0010 2	rear brake caliper, rh
11,2	1	35 0011 2	rear brake caliper, lh
12	1	00-00890-E-01	motor shaft CT800 rh
12,1	1	00-00891-E-01	motor shaft CT800 lh
13	12	09-00875-U-01	hexagon socket screw A2 M10X60
14	12	0125 A2 8	washer A2 M8
15	4	0137 B ZN 10	spring lock washer Form B zinc plated M10
16	2	08-00108-U-01	wheel hub RF1, 5x120





## Modell: rewaco CT800 Seite: 6,1

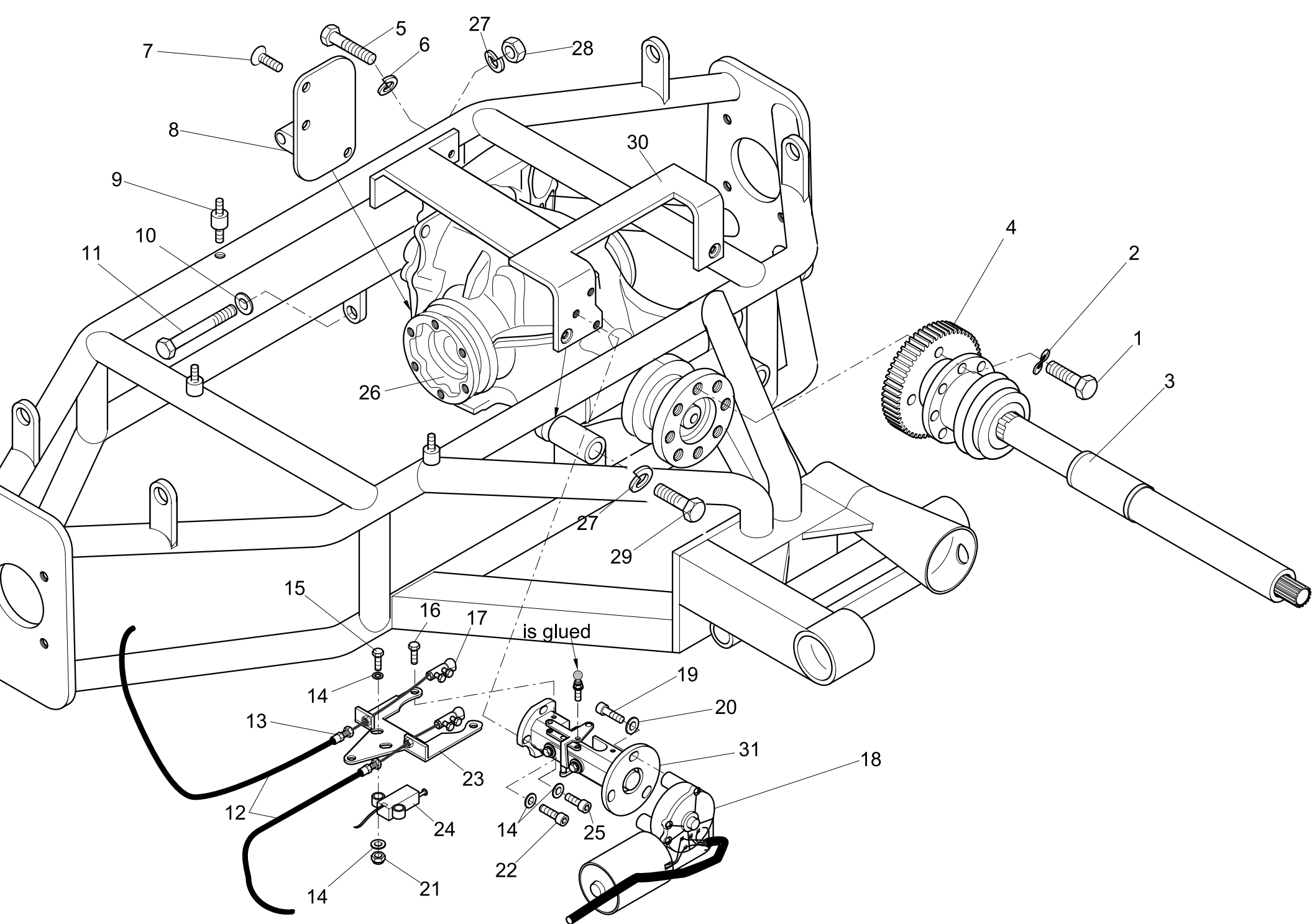
Pos.	Q'ty	Art.-No.	Article Description
1	1	07-00042-01	swivel head D8/maintenance free
2	3	0934 A2 8	hexagon nut A2 M08
3	3	0127 B A2 8	spring lock washer Form B A2 M8
4	5	0125 A2 8	washer A2 M8
5	3	0933 A2 8/25	hexagon screw A2 M08X25
6	1	03-00889-S-01	steel braided hose, front brake, 1080mm, outer threat 10mm, ring connection 45°
7	2	00-00900-S-01	angle cleat for container CT800
8	3	05 0200 2	banjo bolt, brake master cylinder M10X1X18
8,1	6	05 0210 2	seal ring 10mm, banjo bolt brake master cylinder
9	1	03-00888-S-01	steel braided hose, front brake, 1080mm, outer threat 10mm, ring connection 45°
10	1	03-00891-S-01	brake tube CT two-way valve/brake master cylinder - 1200mm 1xfitting 45°+1x fitting 45° collateral
11	1	00-00898-S-01	plunger rod HBZ CT800
12	1	04-00690-U-01	brake master cylinder since 12/07
13	1	00-00897-S-01	bracket for HBZ CT800
14	1	03-01002-E-01	exhaust tip CT800 right
15	1	0912 A2 10/40	hexagon socket screw A2 M10X40



Wird mit vorhandenen  
klammer befestigt

## Modell: rewaco CT800 Seite: 6,2

Pos.	Q'ty	Art.-No.	Article Description
1	1	02-00704-S-01	punched front brake disk, stainless steel

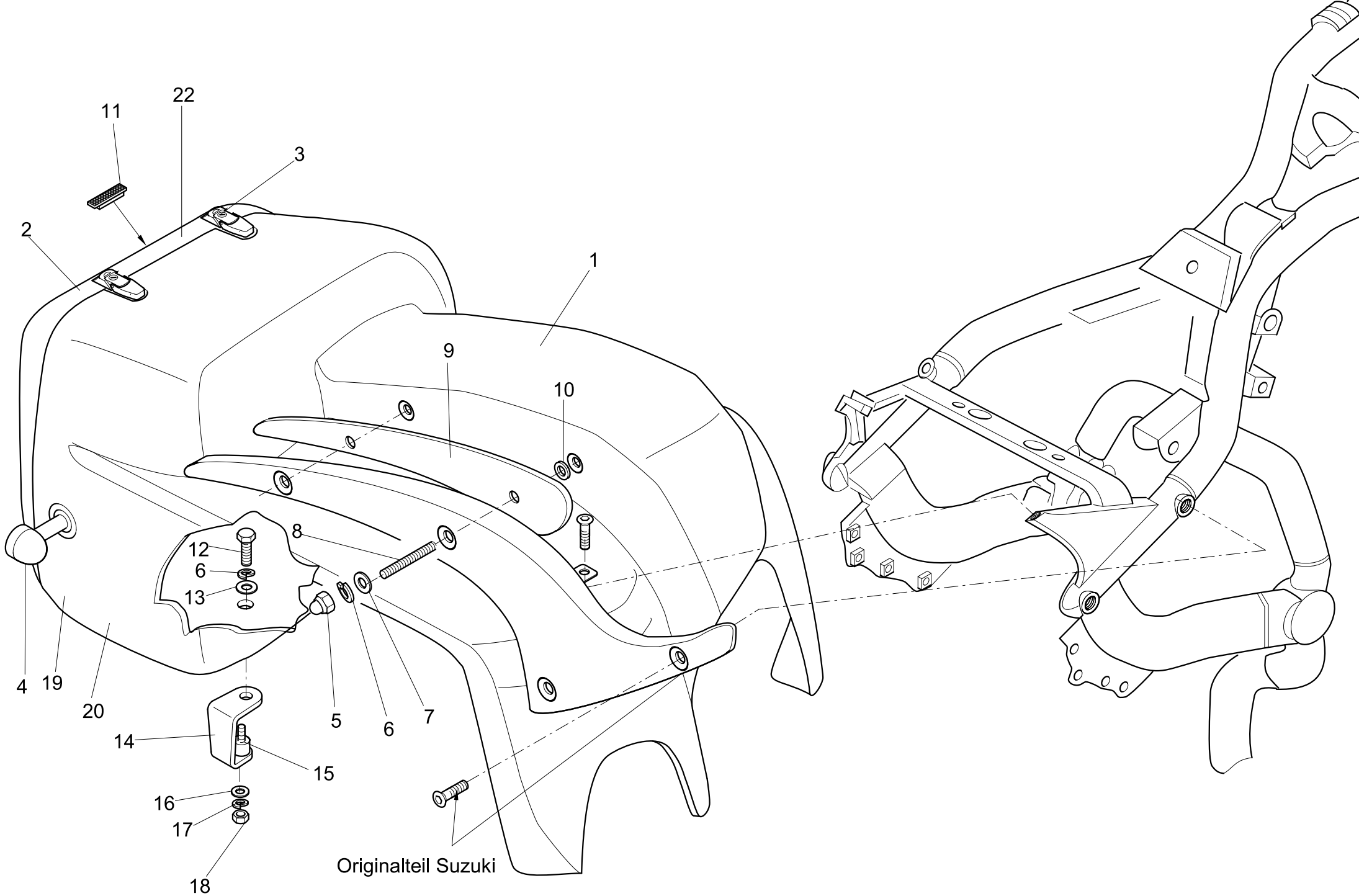


## Modell: rewaco CT800 Page: 7

Pos.	Q'ty	Art.-No.	Article Description
1	8	0933 ZN 10/30	hexagon screw zinc plated M10X30
2	8	0137 B ZN 10	spring lock washer Form B zinc plated M10
3	1	03-00826-S-01	cardan shaft CT800S
4	1	00-01035-E-01	cogwheel CT800
5	2	0933 ZN 10/35	hexagon screw zinc plated M10X35
6	2	0127 B A2 10	spring lock washer Form B A2 M10
7	3	7991 A2 10/60	hexagon socket countersunk flathead screw A2 M10X60
8	1	00-00919-S-01	bearing shaft, pedals, FX
9	1	00-01042-E-01	bearing shaft, pedals, FX
10	1	0125 ZN 12	washer zinc plated M12
11	2	00-14609-E-01	
12	2	04-00734-H-01	choke cable HS6, inner wire, dia. 1.5mm, length 1700mm, one side with brass bowl, dia. 4mm
13	2	04-00727-U-01	choke lever
14	4	0125 A2 6	washer A2 M6
15	3	0933 A2 6/25	hexagon screw A2 M06X25
16	2	0933 A2 6/12	hexagon screw A2 M06X12
17	2	01-00678-F-01	knuckle joint DIN 71802/C10-M6 zinc plated, white
18	1	01-00775-S-01	electric motor, reverse CT800/1800
19	3	09-00800-U-01	countersunk flathead screw A2 M8x25 with allan head
20	3	0125 A2 8	washer A2 M8
21	2	0985 ZN 6	hexagon nut, self-locking zinc plated M06
22	2	0933 A2 6/20	hexagon screw A2 M06X20
23	1	00-01036-E-01	bracket for bus cable and return spring CT800/CT1800
24	1	01-00790-S-01	electric motor, reverse CT800
25	1	0933 A2 6/16	hexagon screw A2 M06X16

## Modell: rewaco CT800 Page: 7

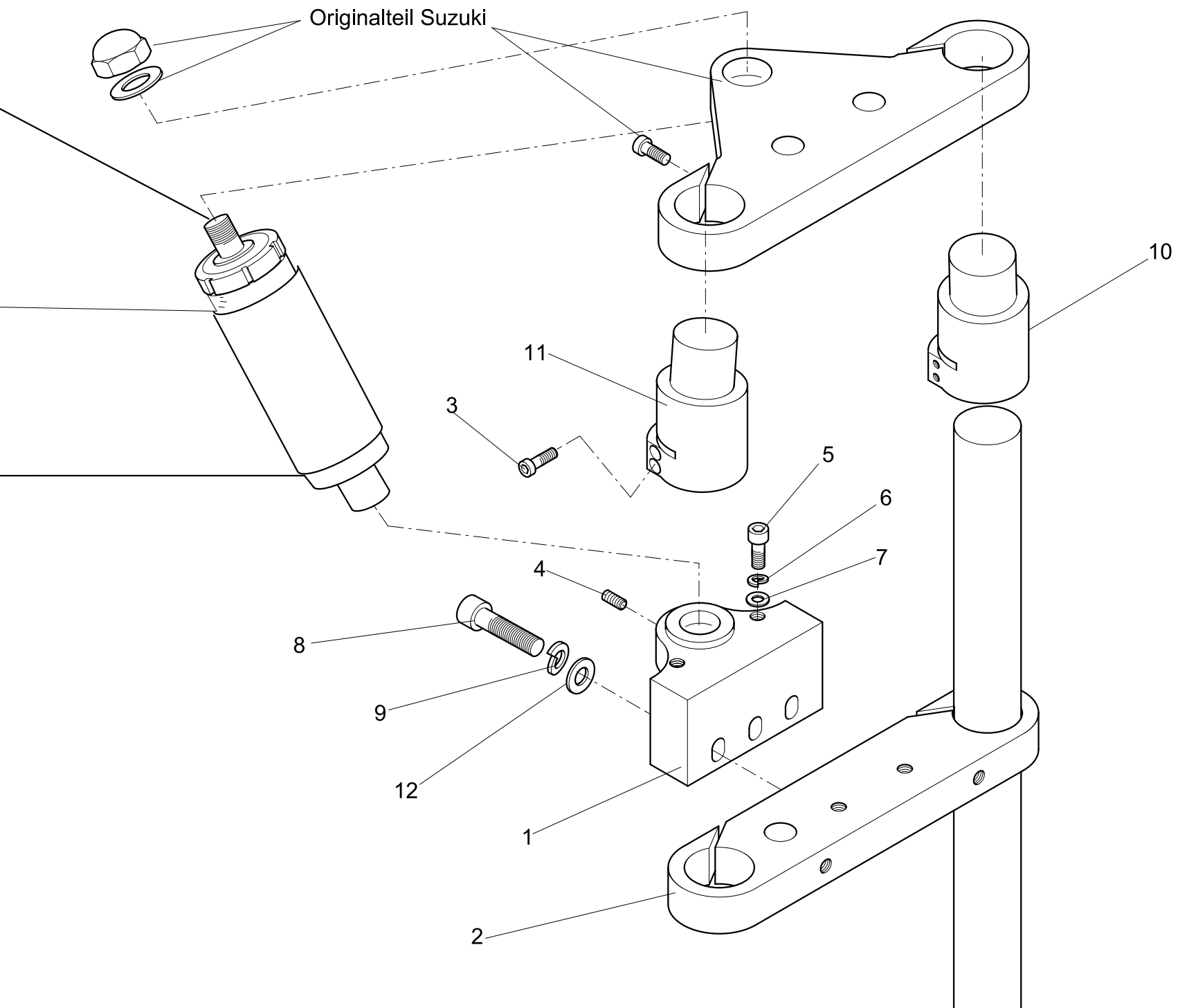
Pos.	Q'ty	Art.-No.	Article Description
26	1	03-00810-W-01	differential CT 168L (i=3.23)
27	3	0127 B A2 12	spring lock washer Form B A2 M12
28	1	0934 A2 12	hexagon nut A2 M12
29	2	00-14608-E-01	



Originalteil Suzuki

## Modell: rewaco CT800 Seite: 8

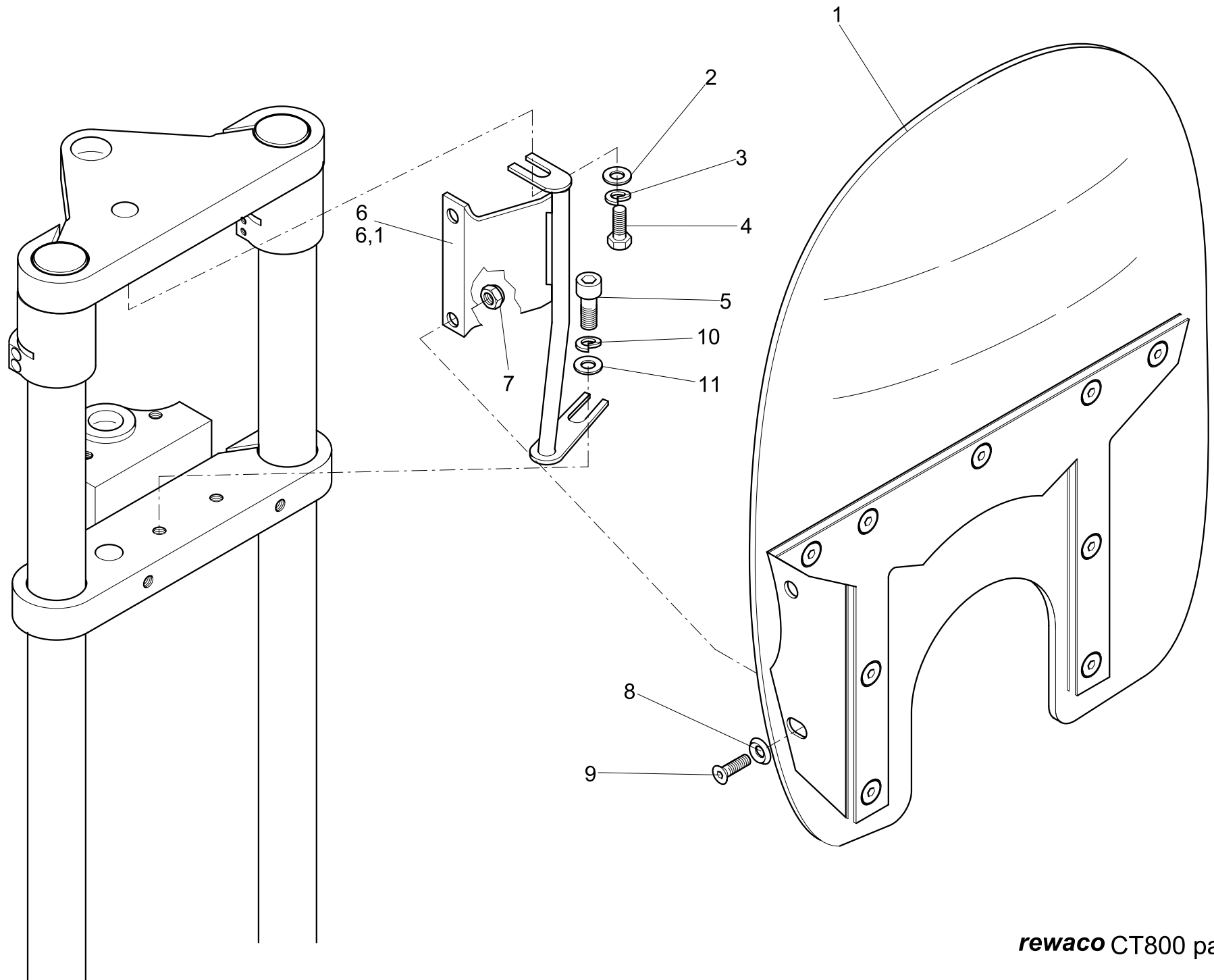
Pos.	Q'ty	Art.-No.	Article Description
1	1	06-00893-F-01	
2	1	06-00894-F-01	mudguard, for tires 335/30-18
3	2	10 0202 1	lock, top case HS4/HS6 FX4/FX6 since 04/2005 and glove compartment RF1
4	2	01-00749-S-01	rear turn-signal CT800 / CT1800
5	4	1587 A2 8	acorn nut A2 M08
6	4	0127 B A2 8	spring lock washer Form B A2 M8
7	4	0125 A2 8	washer A2 M8
8	4	09-00877-U-01	threaded bolt zinc plated M08X80
9	2	00-00889-E-01	framerearreinforcement (laserpart) CT800
10	4	06-01029-F-01	
11	1	EAS10005	lamp, registration plate, RF1, Excalibur S1+S2
12	1	0933 A2 8/25	hexagon screw A2 M08X25
13	1	9021 A2 8	washer, body, A2 M8
14	1	00-00921-S-01	bearing shaft, pedals, FX
15	1	03 0046 2.1	rubber cushion for fan RF1 / electr. fuel pump FX6 (20x15 with thread M6x15/rubber cushion M6)
16	1	0125 A2 6	washer A2 M6
17	1	0127 B A2 6	spring lock washer Form B A2 M6
18	1	0934 A2 6	hexagon nut A2 M06
19	2	06-00895-F-01	Hinge-joint for hatch CT
20	1	00-00913-S-01	bearing shaft, pedals, FX
21	1	00-01095-S-01	bearing shaft, pedals, FX
22	1	00-00912-S-01	bearing shaft, pedals, FX





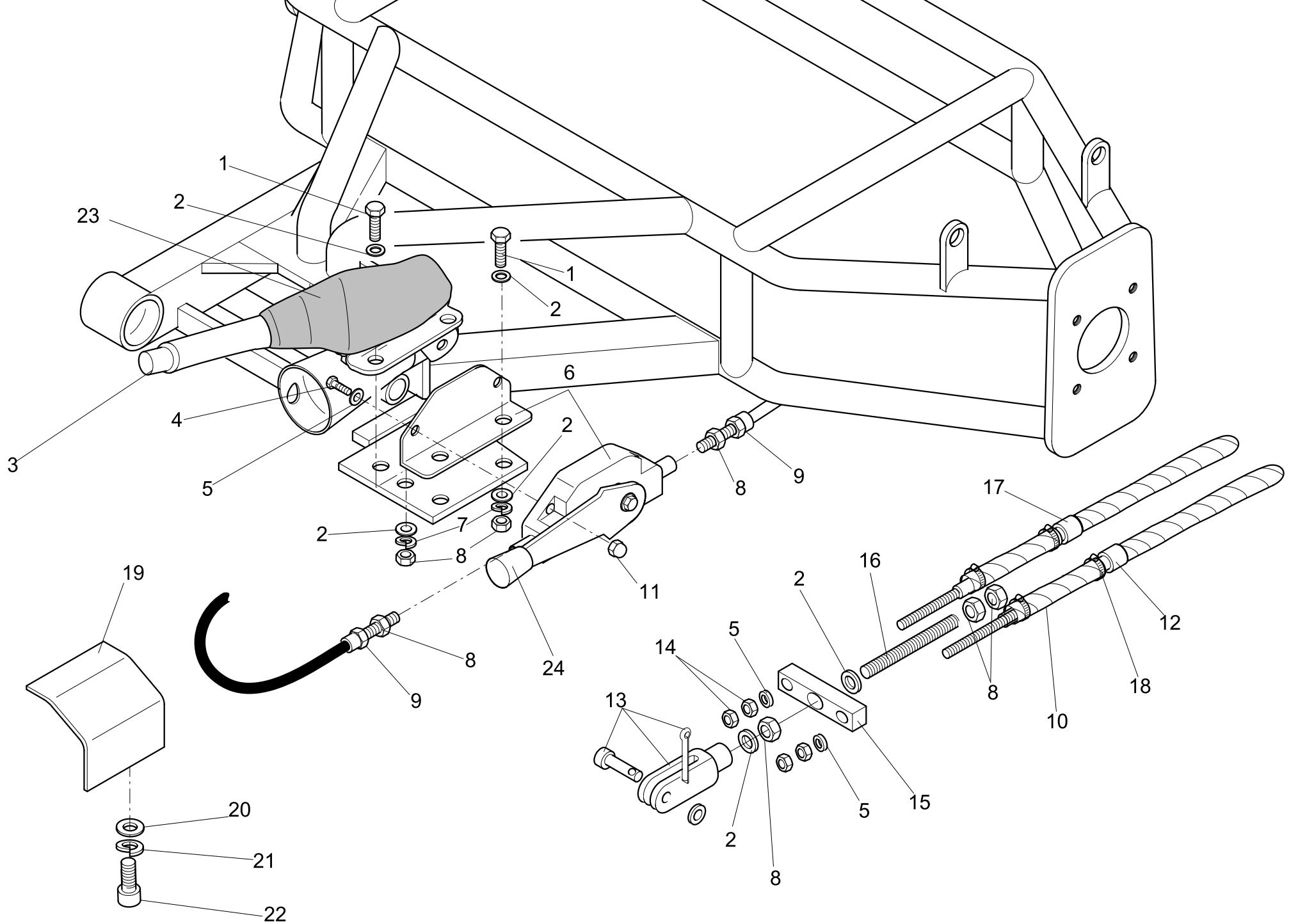
## Modell: rewaco CT800 Seite: 9

Pos.	Q'ty	Art.-No.	Article Description
1	1	02-00708-U-01	forkbeam CT / FT1/89.7x83.26x140 aluminium
2	1	02-00709-U-01	forkbeam CT / FT1/31x70x310 aluminium
3	4	0912 A2 6/20	hexagon socket screw A2 M06X20
4	1	0913 A2 8/8	hexagon socket screw A2 M08X08 (slug)
5	2	0912 A2 10/20	hexagon socket screw A2 M10X20
6	2	0127 B A2 10	spring lock washer Form B A2 M10
7	2	0125 A2 10	washer A2 M10
8	2	0912 A2 12/60	hexagon socket screw A2 M12X60
9	2	0127 A ZN 12	spring lock washer A zinc plated M12
10	1	02-00707-U-01	forkextension CT800 lh DT1/D 66.64x95.49 aluminium
11	1	02-00706-U-01	forkextension CT800 rh DT1/D 66.64x95.49 aluminium
12	2	0125 ZN 12	washer zinc plated M12



## Modell: rewaco CT800 Seite: 10

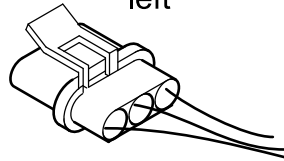
Pos.	Q'ty	Art.-No.	Article Description
1	1	09-00824-S-01	windshield, transparent/big with mounting set for 26mm handlebar (for 28mm handlebar only plus art.-no. 08 7978 28)
2	2	9021 A2 8	washer, body, A2 M8
3	2	0127 B A2 8	spring lock washer Form B A2 M8
4	2	0933 A2 8/20	hexagon screw A2 M08X20
5	2	0912 A2 10/20	hexagon socket screw A2 M10X20
6	1	06-01012-E-01	Puig Windscreen Holder right CT800
6,1	1	06-01013-E-01	Puig Windscreen Holder left CT800
7	4	0985 A2 8	hexagon nut, self-locking A2 M08
8	4	07-00033-U-01	washer for countersunk flathead screws M8
9	4	09-00800-U-01	countersunk flathead screw A2 M8x25 with allan head
10	2	0127 B A2 10	spring lock washer Form B A2 M10
11	2	9021 A2 10	washer, body, A2 M10



## Modell: rewaco CT800 Seite: 11

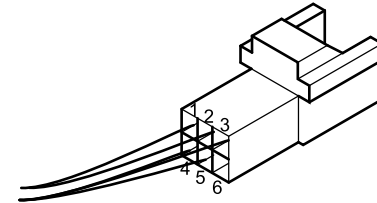
Pos.	Q'ty	Art.-No.	Article Description
1	4	0933 A2 8/25	hexagon screw A2 M08X25
2	10	0125 A2 8	washer A2 M8
3	1	09 0010 2	parking brake lever
4	2	0933 A2 6/30	hexagon screw A2 M06X30
5	4	0125 A2 6	washer A2 M6
6	1	04-00726-U-01	choke lever
7	4	0127 B A2 8	spring lock washer Form B A2 M8
8	7	0934 A2 8	hexagon nut A2 M08
9	2	04-00727-U-01	choke lever
10	4	04-00690-B-01	protection tube, brake cable
11	2	1587 A2 6	acorn nut A2 M06
12	1	33 0280 2	cable, parking brake (short) for disk brake
13	1	09 0110 2	fork joint with bolt and cotter-pin for parking brake and trunk lid lock RF1, 8x32 VZ
14	4	0934 A2 6	hexagon nut A2 M06
15	1	09 0140 2.1	manifold for parking brake cable since 1/2001
16	1	0976 ZN 8/120	threaded bolt zinc plated M08X120
17	1	33 0280 2	cable, parking brake (short) for disk brake
18	4	539 8 12	Zebra-hose clip B 7.5mm SW6 8-12
19	1	00-01029-S-01	chrome-cover for lateral upright-holder CT800/1800
20	1	0125 A2 12	washer A2 M12
21	1	0127 B A2 12	spring lock washer Form B A2 M12
22	1	0912 A2 12/40	hexagon socket screw A2 M12X40
23	1	08-00898-E-01	cover, parking brake lever RF1
24	1	04-00751-U-01	choke lever

wing  
left



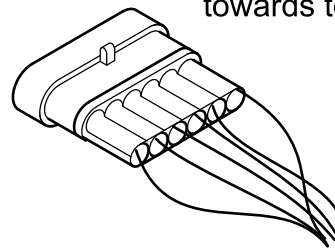
- 1 green
- 2 brown
- 3 gray

towards basic cable loom



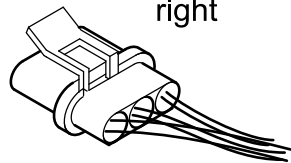
- 1 green
- 2 gray
- 3 brown
- 4 white
- 5 black white
- 6

towards topcase



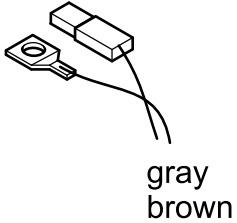
- 1 white
- 2 brown
- 3 brown
- 4 gray
- 5 brown
- 6 black white

wing  
right

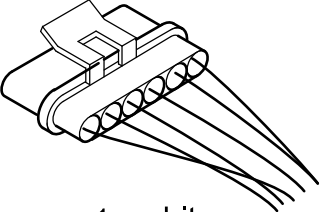
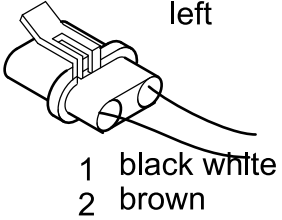


- 1 2x green
- 2 2x brown
- 3 2x gray

Number plate lighting

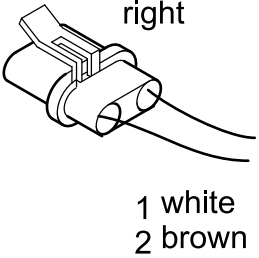


indicator  
left



- 1 white
- 2 brown
- 3 brown
- 4 gray
- 5 brown
- 6 black white

indicator  
right

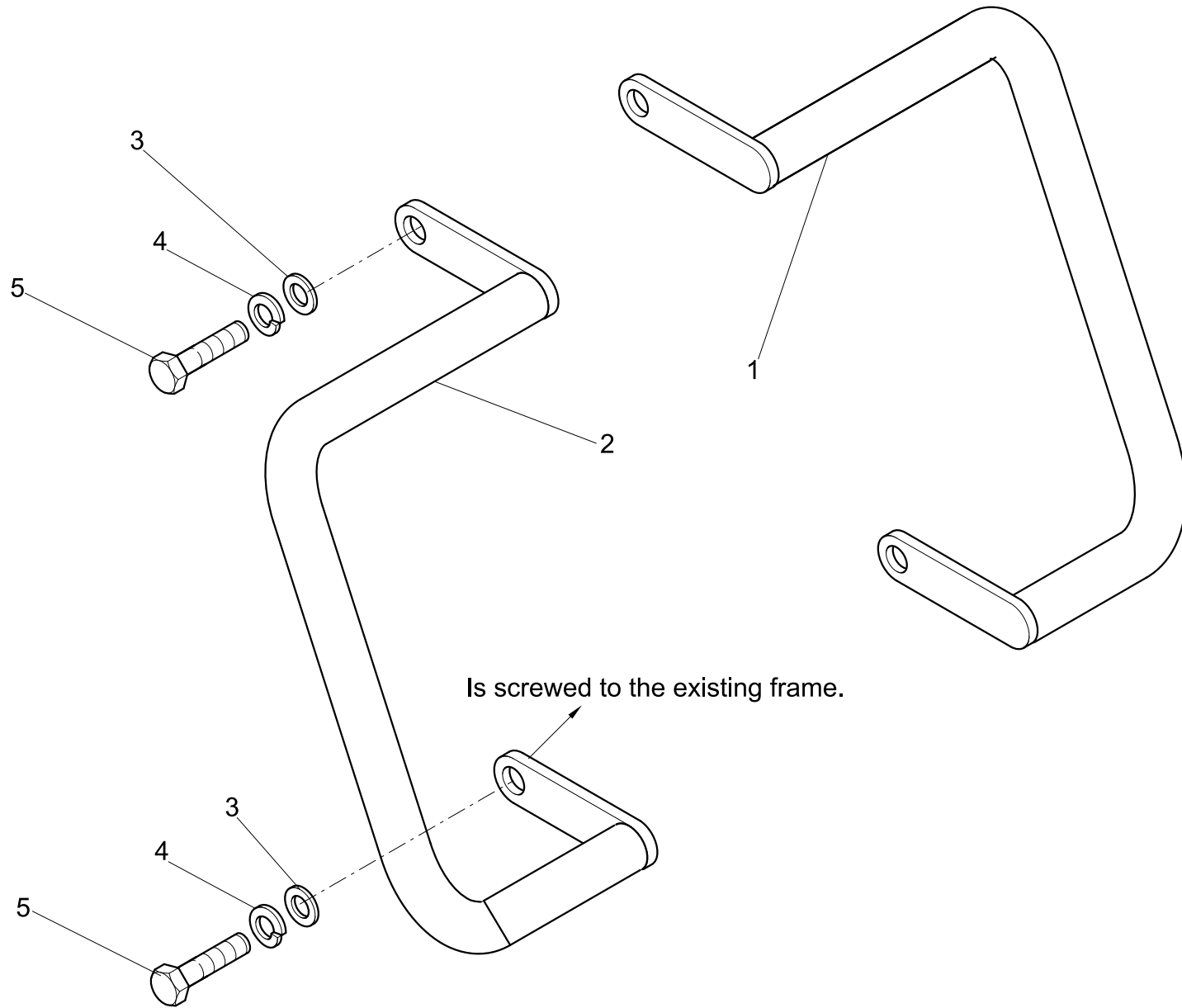


## Modell: rewaco CT800 Seite: 13,1

Pos.	Q'ty	Art.-No.	Article Description
1	1	01-00745-S-01	Rear lighting wiring harness CT800/1800/2300
2	1	01-00742-S-01	wiring harness/extension for fuel pump CT800

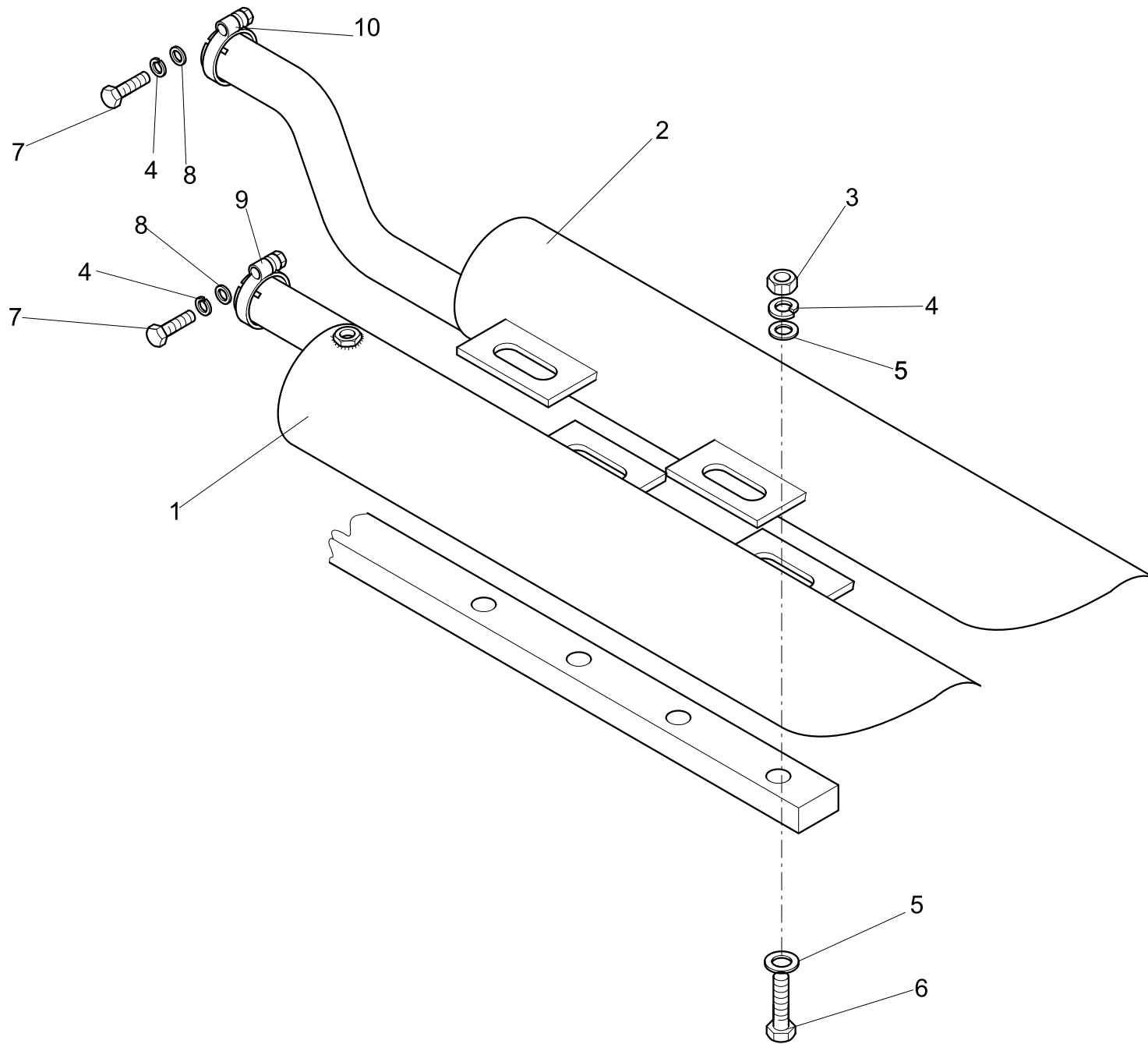






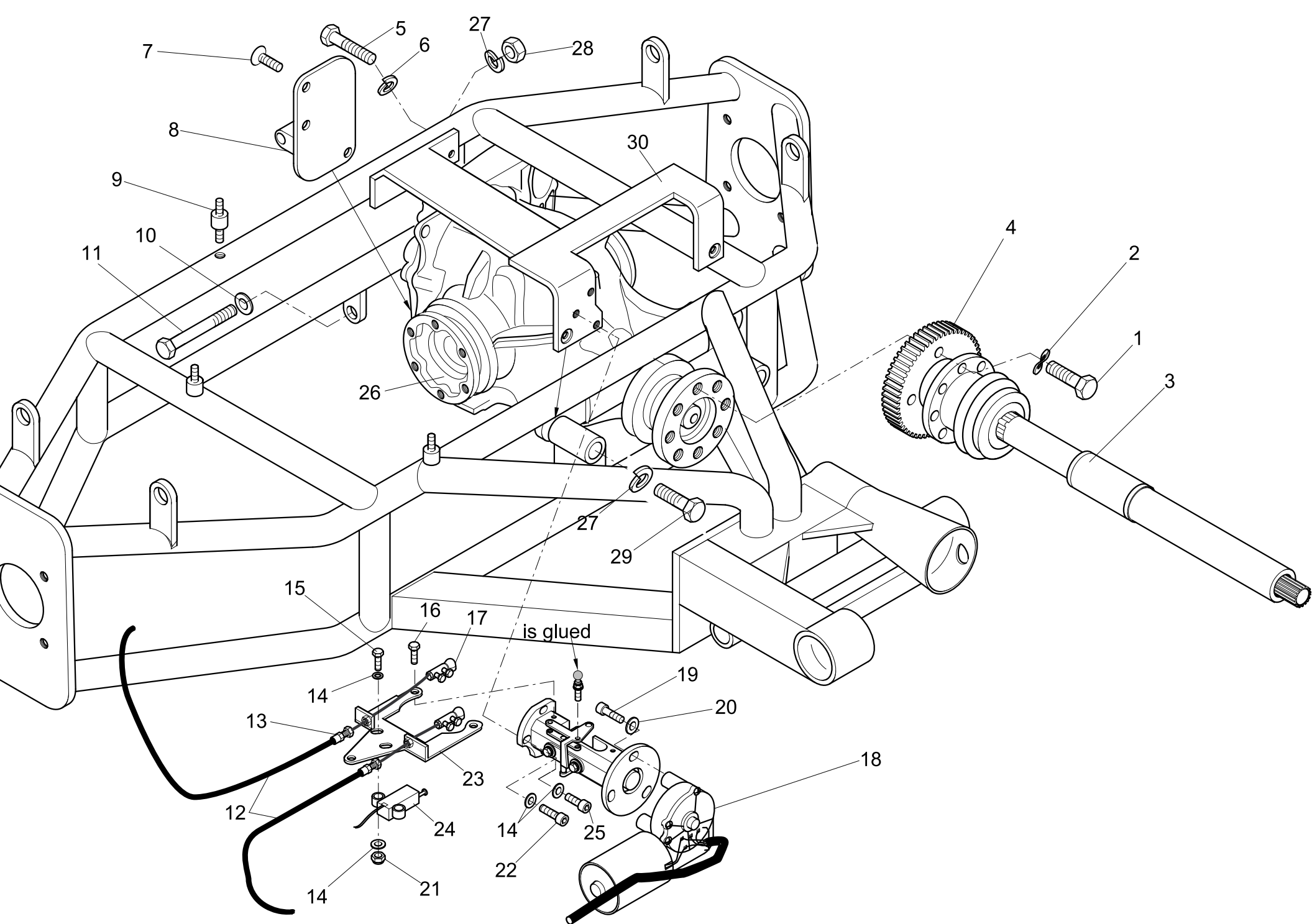
## Modell: rewaco CT800 Seite: 14

Pos.	Q'ty	Art.-No.	Article Description
1	1	06-00984-F-01	Leg guard CT800 left
2	1	06-00985-F-01	Leg guard CT800 right
3	4	0125 A2 10	washer A2 M10
4	4	0127 B A2 10	spring lock washer Form B A2 M10
5	4	0933 ZN 10/35	hexagon screw zinc plated M10X35



## Modell: rewaco CT800 Seite: 15

Pos.	Q'ty	Art.-No.	Article Description
1	1	03-01003-E-01	exhaust tip CT800 left
2	1	03-01002-E-01	exhaust tip CT800 right
3	4	0934 A2 8	hexagon nut A2 M08
4	4	0127 B A2 8	spring lock washer Form B A2 M8
5	8	9021 A2 8	washer, body, A2 M8
6	4	0933 A2 8/65	hexagon screw A2 M08X65
7	2	0933 A2 8/40	hexagon screw A2 M08X40
8	8	0125 A2 8	washer A2 M8
9	1	00-00896-S-01	exhaust clamp D 38x2 CT800
10	1	00-00924-S-01	exhaust clamp D 38x3 CT800

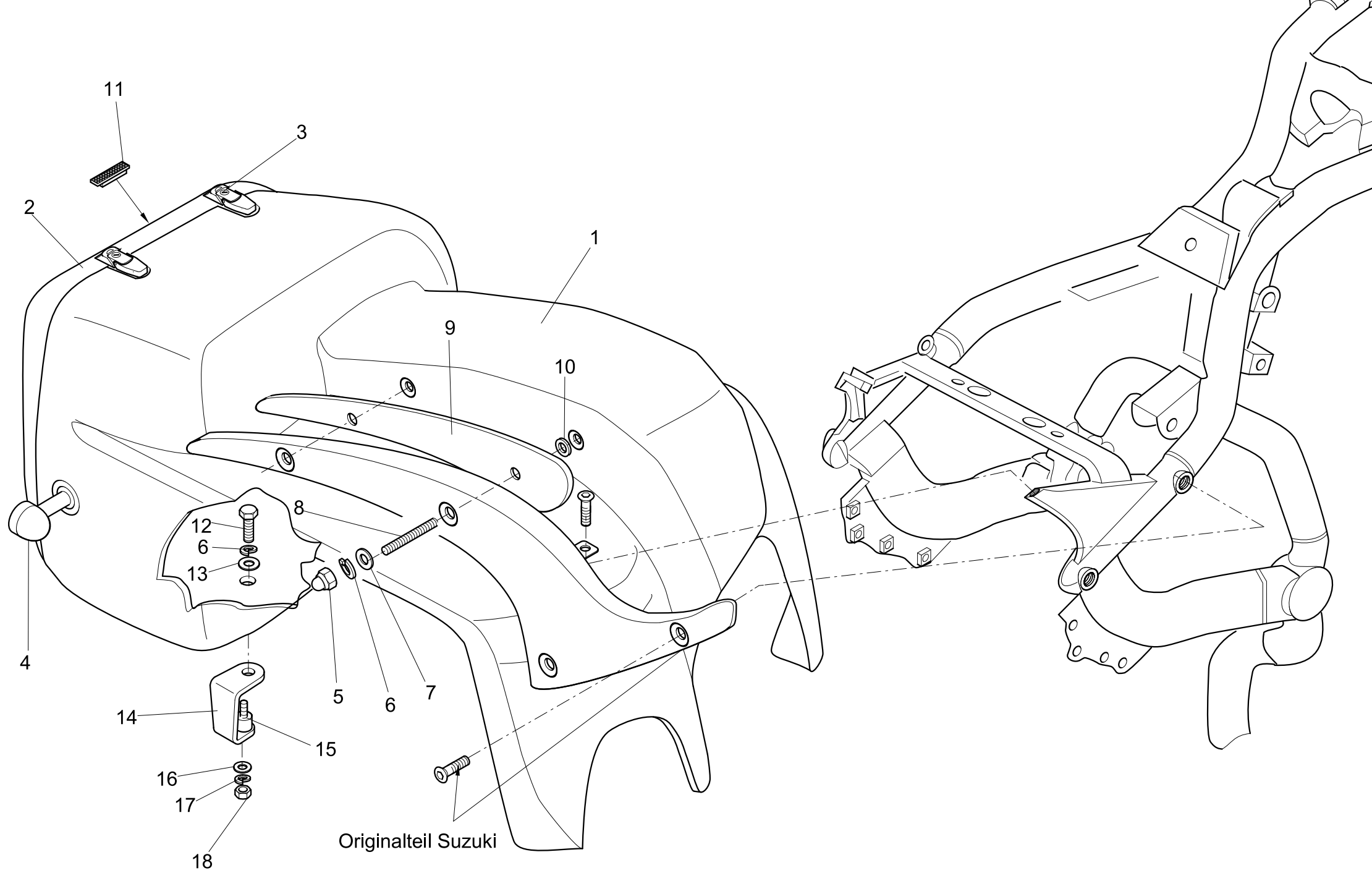


## Modell: rewaco CT800 Seite: 7

Pos.	Q'ty	Art.-No.	Article Description
1	8	0933 ZN 10/30	hexagon screw zinc plated M10X30
2	8	0137 B ZN 10	spring lock washer Form B zinc plated M10
3	1	03-00826-S-01	cardan shaft CT800S
4	1	00-01035-E-01	cogwheel CT800
5	2	0933 ZN 10/35	hexagon screw zinc plated M10X35
6	2	0127 B A2 10	spring lock washer Form B A2 M10
7	3	7991 A2 10/60	hexagon socket countersunk flathead screw A2 M10X60
8	1	00-00919-S-01	bearing shaft, pedals, FX
9	3	03 0046 2.1	rubber cushion for fan RF1 / electr. fuel pump FX6 (20x15 with thread M6x15/rubber cushion M6)
10	1	0125 ZN 12	washer zinc plated M12
11	1	0931 ZN 12/110	hexagon screw zinc plated M12X110
12	2	04-00734-H-01	choke cable HS6, inner wire, dia. 1.5mm, length 1700mm, one side with brass bowl, dia. 4mm
13	2	04-00727-U-01	choke lever
14	4	0125 A2 6	washer A2 M6
15	3	0933 A2 6/25	hexagon screw A2 M06X25
16	2	0933 A2 6/12	hexagon screw A2 M06X12
17	2	01-00678-F-01	knuckle joint DIN 71802/C10-M6 zinc plated, white
18	1	01-00775-S-01	electric motor, reverse CT800/1800
19	3	09-00800-U-01	countersunk flathead screw A2 M8x25 with allan head
20	3	0125 A2 8	washer A2 M8
21	2	0985 ZN 6	hexagon nut, self-locking zinc plated M06
22	2	0933 A2 6/20	hexagon screw A2 M06X20
23	1	00-01036-E-01	bracket for bus cable and return spring CT800
24	1	16 0871 1	switch, electro pneumatic gearshift, gear lock, reverse gear

## Modell: rewaco CT800 Seite: 7

Pos.	Q'ty	Art.-No.	Article Description
25	1	0933 A2 6/16	hexagon screw A2 M06X16
26	1	03-00810-W-01	differential CT 168L (i=3.23)
27	3	0127 B A2 12	spring lock washer Form B A2 M12
28	1	0934 A2 12	hexagon nut A2 M12
29	2	09-00878-U-01	hexagon screw 10.9 zinc plated M12X100
30	1	01-00790-S-01	electric motor, reverse CT800

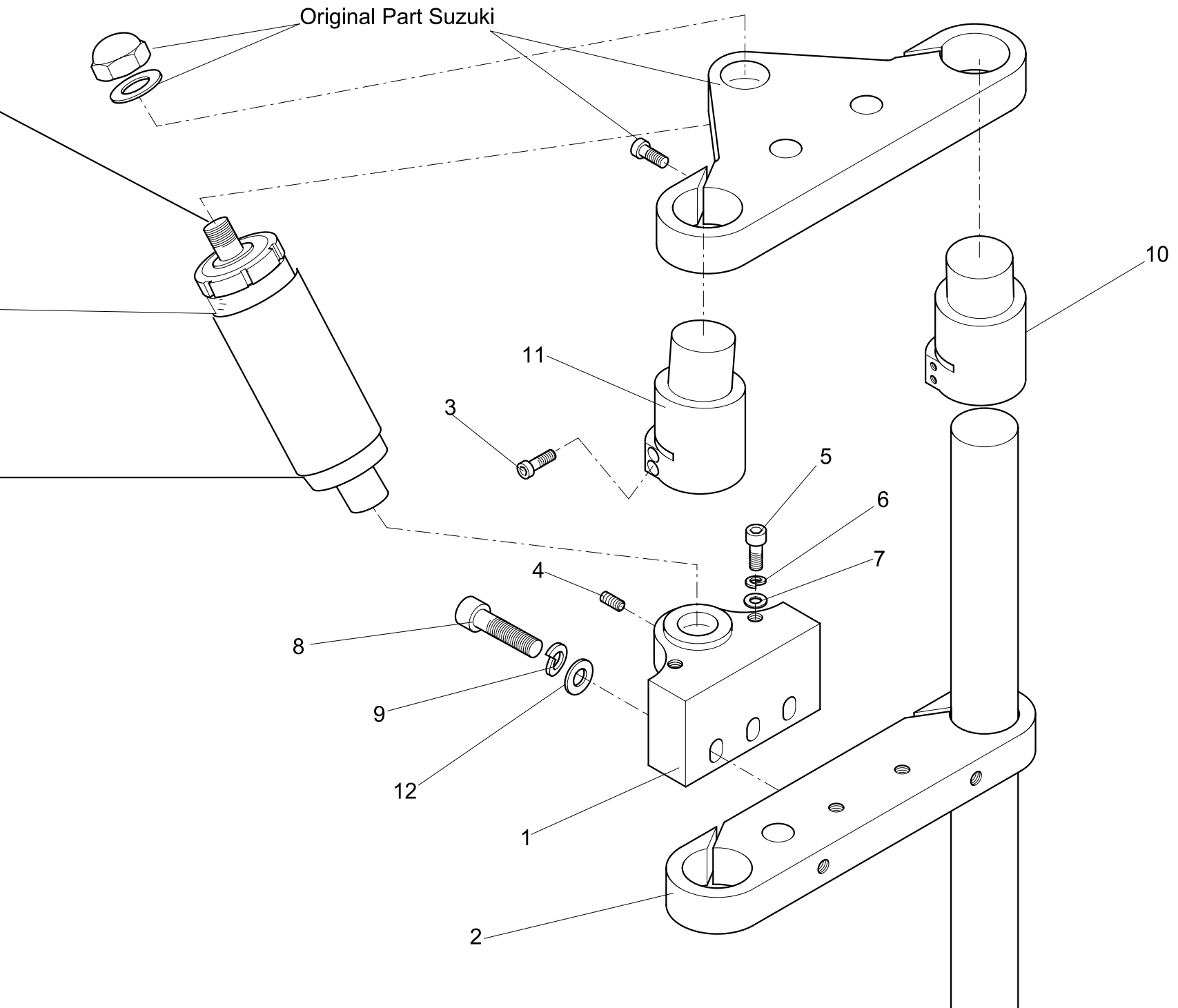


Originalteil Suzuki



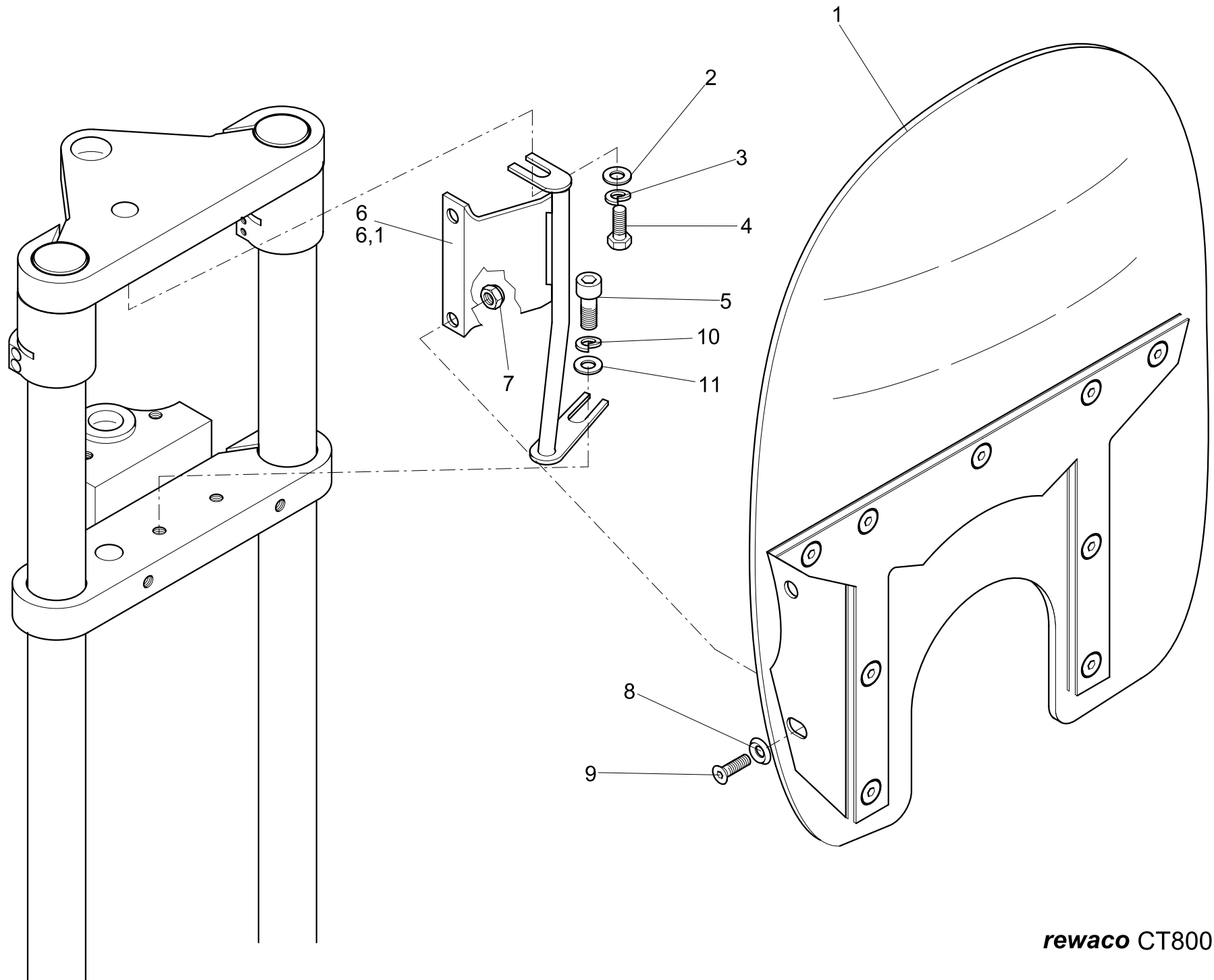
## Modell: rewaco CT800 Seite: 8

Pos.	Q'ty	Art.-No.	Article Description
	2	06-00895-F-01	rear flap CT for painting
1	1	06-01008-F-01	mudguard, for tires 335/30-18
2	1	06-00894-F-01	mudguard, for tires 335/30-18
3	2	10 0202 1	lock, top case HS4/HS6 FX4/FX6 since 04/2005 and glove compartment RF1
4	2	01-00749-S-01	rear turn-signal CT800 / CT1800
5	4	1587 A2 8	acorn nut A2 M08
6	4	0127 B A2 8	spring lock washer Form B A2 M8
7	4	0125 A2 8	washer A2 M8
8	4	09-00877-U-01	threaded bolt zinc plated M08X80
9	2	06-01028-F-01	mudguard, for tires 335/30-18
10	4	06-01029-F-01	spacer washer, front brake disk, std. front end
11	1	EAS10005	lamp, registration plate, RF1, Excalibur S1+S2
12	1	0933 A2 8/25	hexagon screw A2 M08X25
13	1	9021 A2 8	washer, body, A2 M8
14	1	00-00921-S-01	bearing shaft, pedals, FX
15	1	03 0046 2.1	rubber cushion for fan RF1 / electr. fuel pump FX6 (20x15 with thread M6x15/rubber cushion M6)
16	1	0125 A2 6	washer A2 M6
17	1	0127 B A2 6	spring lock washer Form B A2 M6
18	1	0934 A2 6	hexagon nut A2 M06
19	2	06-00895-F-01	rear flap CT for painting
20	1	00-00913-S-01	bearing shaft, pedals, FX



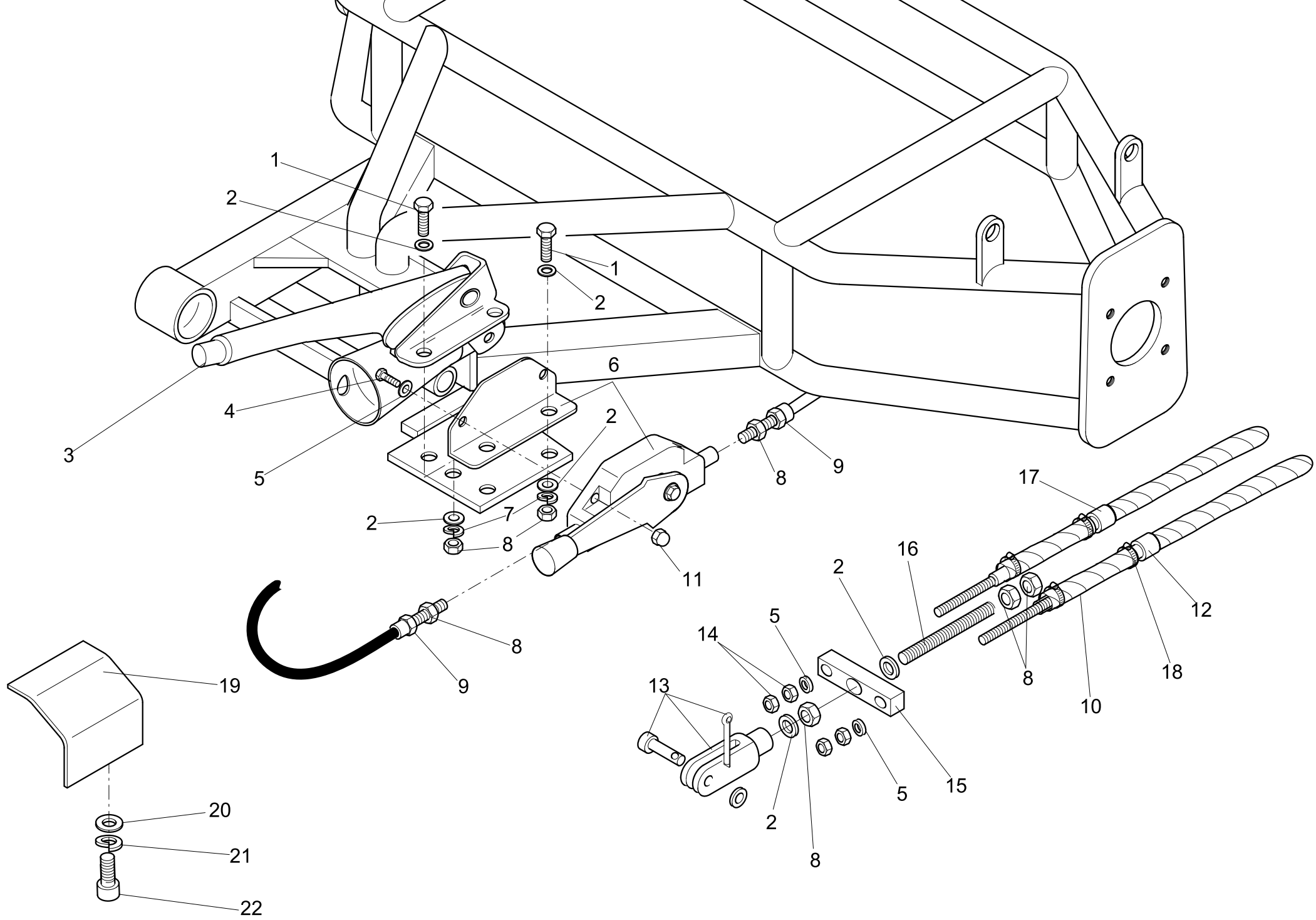
## Modell: rewaco CT800 Seite: 9

Pos.	Q'ty	Art.-No.	Article Description
1	1	02-00708-U-01	forkbeam CT / FT1/89.7x83.26x140 aluminium
2	1	02-00709-U-01	forkbeam CT / FT1/31x70x310 aluminium
3	4	0912 A2 6/20	hexagon socket screw A2 M06X20
4	1	0913 A2 8/8	hexagon socket screw A2 M08X08 (slug)
5	2	0912 A2 10/20	hexagon socket screw A2 M10X20
6	2	0127 B A2 10	spring lock washer Form B A2 M10
7	2	0125 A2 10	washer A2 M10
8	2	0912 A2 12/60	hexagon socket screw A2 M12X60
9	2	0127 A ZN 12	spring lock washer A zinc plated M12
10	1	02-00707-U-01	forkextension CT800 lh DT1/D 66.64x95.49 aluminium
11	1	02-00706-U-01	forkextension CT800 rh DT1/D 66.64x95.49 aluminium
12	2	0125 ZN 12	washer zinc plated M12



## Modell: rewaco CT800 Seite: 10

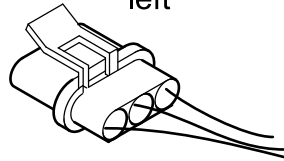
Pos.	Q'ty	Art.-No.	Article Description
1	1	09-00824-S-01	windshield, transparent/big with mounting set for 26mm handlebar (for 28mm handlebar only plus art.-no. 08 7978 28)
2	2	9021 A2 8	washer, body, A2 M8
3	2	0127 B A2 8	spring lock washer Form B A2 M8
4	2	0933 A2 8/20	hexagon screw A2 M08X20
5	2	0912 A2 10/20	hexagon socket screw A2 M10X20
6	1	06-01012-E-01	Puig Windscreen Holder right CT800
6,1	1	06-01013-E-01	Puig Windscreen Holder left CT800
7	4	0985 A2 8	hexagon nut, self-locking A2 M08
8	4	07-00033-U-01	washer for countersunk flathead screws M8
9	4	09-00800-U-01	countersunk flathead screw A2 M8x25 with allan head
10	2	0127 B A2 10	spring lock washer Form B A2 M10
11	2	9021 A2 10	washer, body, A2 M10



## Modell: rewaco CT800 Seite: 11

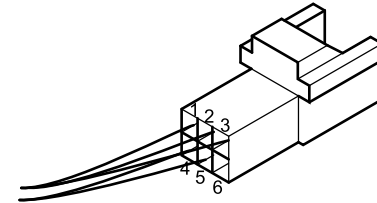
Pos.	Q'ty	Art.-No.	Article Description
1	4	0933 A2 8/25	hexagon screw A2 M08X25
2	10	0125 A2 8	washer A2 M8
3	1	09 0010 2	parking brake lever
4	2	0933 A2 6/30	hexagon screw A2 M06X30
5	4	0125 A2 6	washer A2 M6
6	1	04-00726-U-01	choke lever
7	4	0127 B A2 8	spring lock washer Form B A2 M8
8	7	0934 A2 8	hexagon nut A2 M08
9	2	04-00727-U-01	choke lever
10	4	04-00690-B-01	protection tube, brake cable
11	2	1587 A2 6	acorn nut A2 M06
12	1	06-00678-C-01	parking brake cable, short, RF1
13	1	09 0110 2	fork joint with bolt and cotter-pin for parking brake and trunk lid lock RF1, 8x32 VZ
14	4	0934 A2 6	hexagon nut A2 M06
15	1	09 0140 2.1	manifold for parking brake cable since 1/2001
16	1	0976 ZN 8/120	threaded bolt zinc plated M08X120
17	1	06-00677-C-01	parking brake cable, long, RF1 / CT
18	4	539 8 12	Zebra-hose clip B 7.5mm SW6 8-12
19	1	00-01029-S-01	chrome-cover for lateral upright-holder CT800/1800
20	1	0125 A2 12	washer A2 M12
21	1	0127 B A2 12	spring lock washer Form B A2 M12
22	1	0912 A2 12/40	hexagon socket screw A2 M12X40

wing  
left



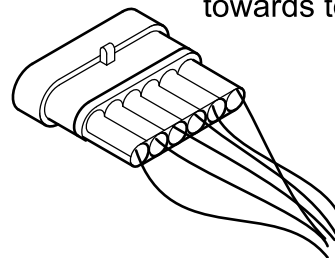
- 1 green
- 2 brown
- 3 gray

towards basic cable loom



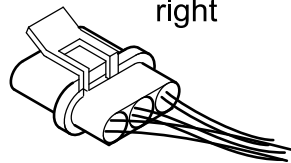
- 1 green
- 2 gray
- 3 brown
- 4 white
- 5 black white
- 6

towards topcase



- 1 white
- 2 brown
- 3 brown
- 4 gray
- 5 brown
- 6 black white

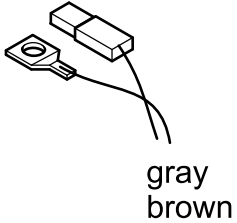
wing  
right



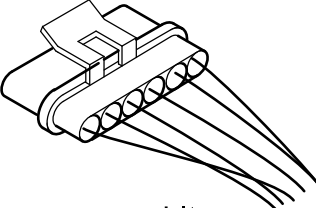
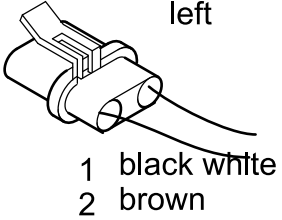
- 1 2x green
- 2 2x brown
- 3 2x gray



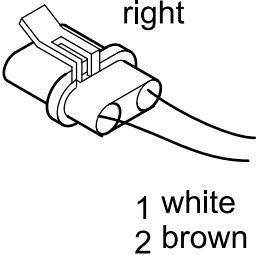
Number plate lighting

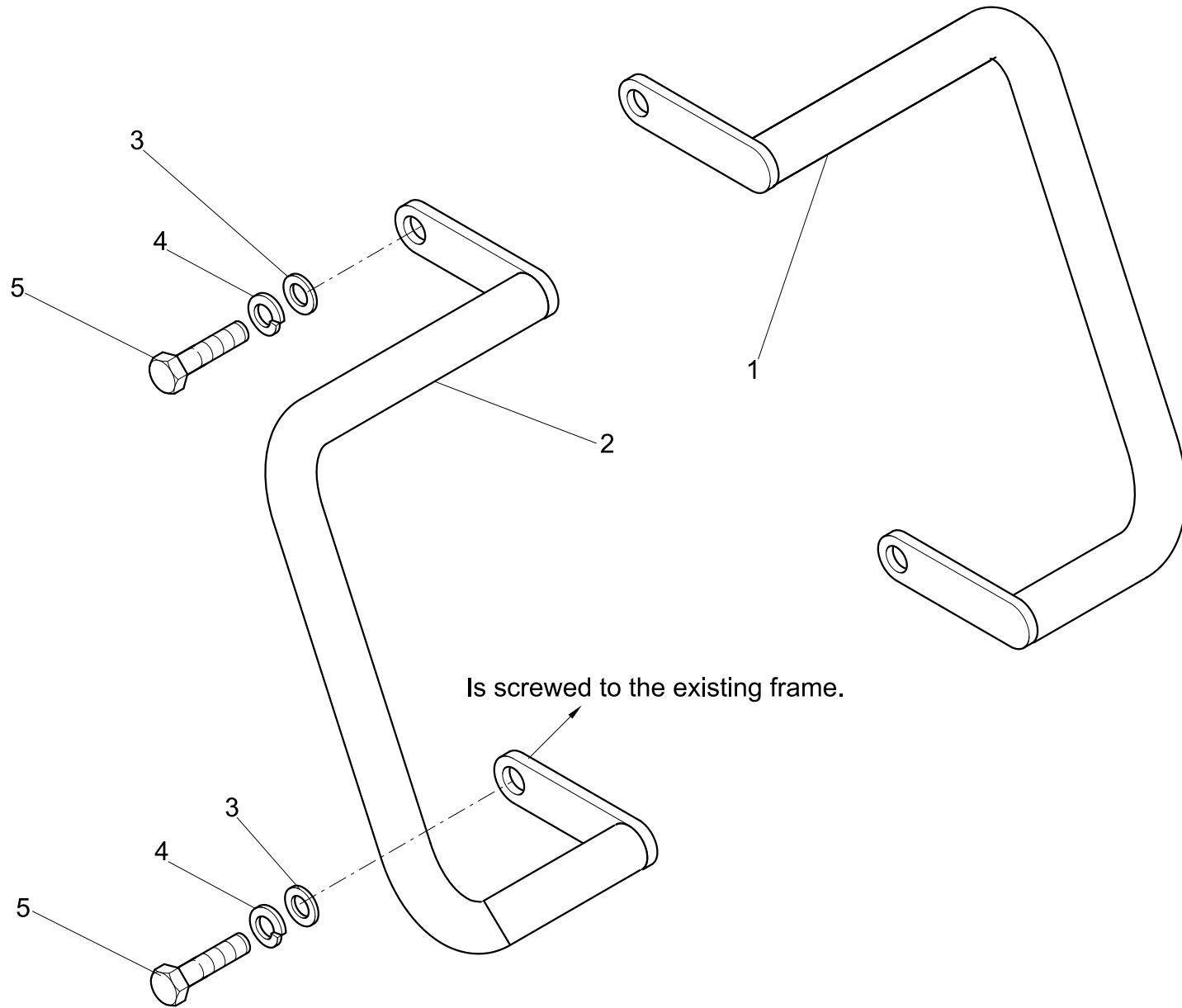


indicator  
left



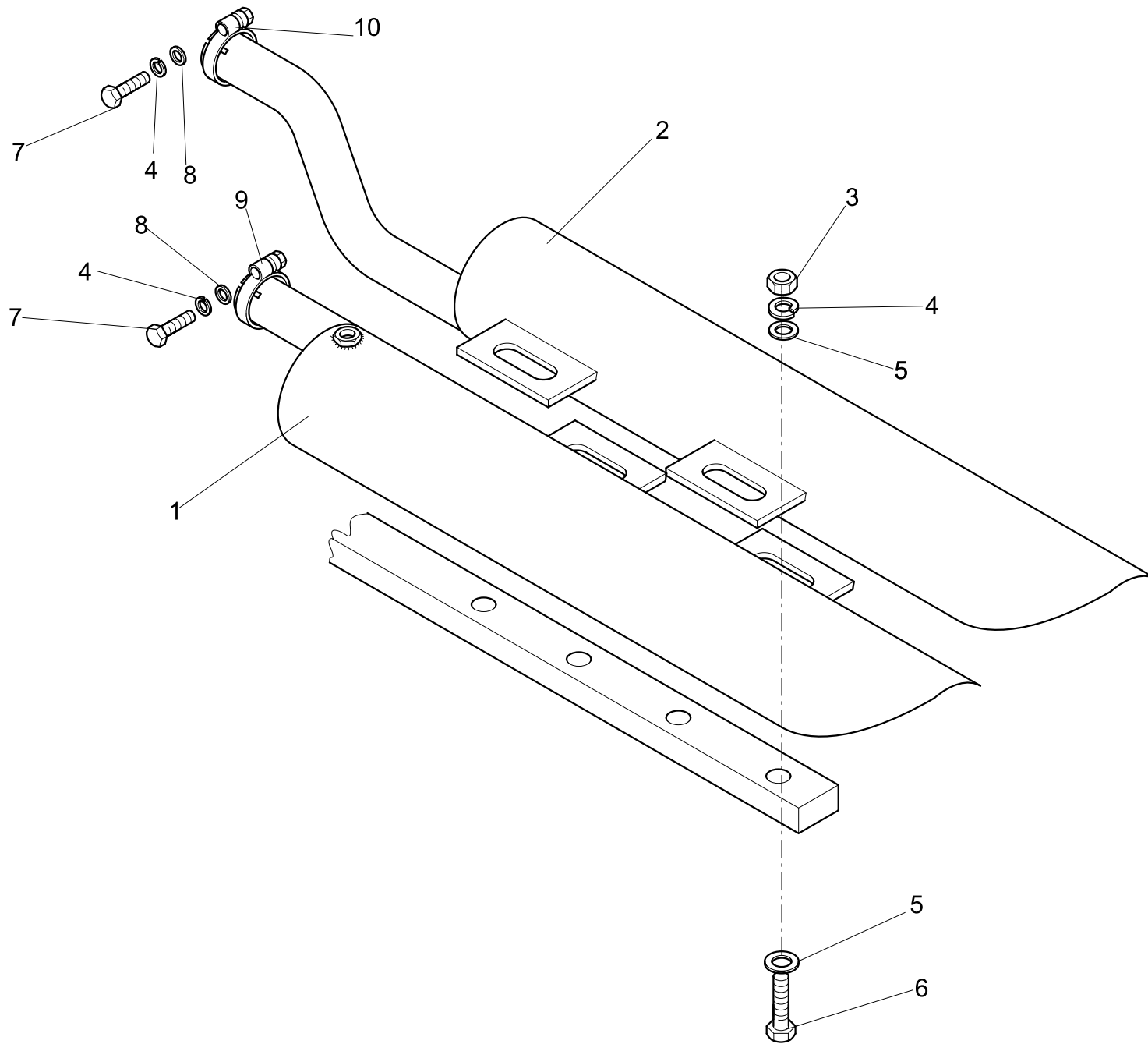
indicator  
right





## Modell: rewaco CT800 Seite: 14

Pos.	Q'ty	Art.-No.	Article Description
1	1	06-00984-F-01	Leg guard CT800 left
2	1	06-00985-F-01	Leg guard CT800 right
3	4	0125 A2 10	washer A2 M10
4	4	0127 B A2 10	spring lock washer Form B A2 M10
5	4	0933 ZN 10/35	hexagon screw zinc plated M10X35



## Modell: rewaco CT800 Seite: 15

Pos.	Q'ty	Art.-No.	Article Description
1	1	03-01003-E-01	exhaust tip CT800 left
2	1	03-01002-E-01	exhaust tip CT800 right
3	4	0934 A2 8	hexagon nut A2 M08
4	4	0127 B A2 8	spring lock washer Form B A2 M8
5	8	9021 A2 8	washer, body, A2 M8
6	4	0933 A2 8/65	hexagon screw A2 M08X65
7	2	0933 A2 8/40	hexagon screw A2 M08X40
8	8	0125 A2 8	washer A2 M8
9	1	00-00896-S-01	exhaust clamp D 38x2 CT800
10	1	00-00924-S-01	exhaust clamp D 38x3 CT800